

# SPM2230P

Six digit dcf clock

for small very weak display  
and extended alarm function

Datasheet

Version: Firmware 1.74-135



**StefPro UG (haftungsbeschränkt) & Co. KG**

Theilenmoorstr. 11  
26345 Bockhorn, Germany

Phone: +49-4452-709175

Web: <https://www.stefpro.biz/>

E-mail: [info@stefpro.biz](mailto:info@stefpro.biz)

## Table of Contents

Table of Contents	2
Safety	4
Application and function description	5
Product overview	5
Function description	5
Alarm Function	5
Technical data	5
Construction description	7
Pin assignment	7
Reset	7
VCC	7
AVCC	7
AREF	7
GND	7
Q1, Q2	7
N.C.	8
DCF ps	8
DCF in	8
DIS1 to DIS6	8
SEG_A, SEG_B, SEG_C, SEG_D, SEG_E, SEG_F, SEG_G, SEG_DP	8
Buzzer	8
LightSen	8
TB	8
Basic circuit	9
Properties of the components	10
Transistor array	10
7 segment displays	10
Checked displays	10
Calculate the series resistor for one LED	11
Calculate the series resistor for two LED	12
Keyboard	12
DCF module properties	13
Tested modules	13
Our standard color coding for DCF signals	13
Buzzer properties	14
Buzzer to MP3 player	14
Properties of light sensor with Phototransistor	15
Installation the DCF clock	17
Synchronize with active display	17
Synchronize with deactivated display	17
Button description	19
Menu	19
Normal	19
Display mode of clock	19
Alarm	20
Alarm day selection	20
Alarm enable	20
Alarm time hour	21
Alarm time minute	21
Alarm snooze time	21
Alarm sound wait time	21
Alarm maximum time	21
Alarm exit	21
Brightness	21
Brightness menu	22
Brightness max	22
Brightness min	22
Brightness automatically	22
Brightness speed	22
Brightness factor	22
Brightness offset	23
Exit brightness settings	23
DCF	23

Receiving brightness	23
Receiving brightness	23
Receive state display	23
DCF input pull up	24
DCF input invert	24
Power save pin invert	24
DCF sensitivity	24
DCF exit	25
<b>Clock Settings</b>	<b>25</b>
Set hour	25
Set minute	25
Set year	25
Set month	25
Set day	25
Set time	26
Exit clock settings	26
Info section	26
IC number	26
Firmware version	26
Menu end	26
<b>Attachment</b>	<b>27</b>
Bootloader handling	27
Start the IC/module/device in bootloader mode	27
Use the Firmware Upload Tool to upload an update	27
7 segment characters	28
<b>Change log</b>	<b>28</b>
Safety	28
Product overview	29
DCF module properties	29
Buzzer to MP3 player	29
Set day	29
<b>Liability, warranty and copyright notice</b>	<b>30</b>
Definitions	30
Liability	30
Warranty	30
Copyrightnotice	30
<b>Disposal information</b>	<b>31</b>
<b>Impress</b>	<b>31</b>

## Safety

### Follow the manual



The IC is only safe in operation if all instructions are read in this datasheet.

### General understanding of safety

By the IC there are no hazard under normal use.

### Intended Use

The IC is designed for driving small to middle displays.

The power should come from a safe transformer (also protected transformer) or a corresponding low voltage power supply for the circuit.









Never use a higher voltage or direct mains voltage!

### Concealed Hazards



DANGER

following hazards may arise in case of wrong construction of the circuit and wrong handling of IC:

-  With the direct connection to mains, it's a dangerous voltage on the IC and other components, use a safety transformer!
-  Reverse polarity and overloading the IC may cause in smoke. This smoke possibly contains toxic substances which must not be inhaled! Ventilate the room.
-   Reverse polarity or overload of the IC can cause a hot surface on the IC or other component in the circuit.
  - There is a risk of burning when touching.
  - And flammable materials, for example Paper, can come in fire.
-  Spalling of parts on reverse polarity or overloading of the IC.
-  Wear during the initial commissioning eye protection.
-  The pins of a IC are very pointed and sharp! Therefore, this may cause in sores in case of incorrect handling.
-  Use always passing a ESD bracelet to avoid electric charges! The IC can be damaged if handling without an earthing tape and housing!

### Modifications of the example circuit

The successfully built circuit may be damaged. Therefore check as appropriate all housing part and lines for damage. This applies in particular to parts of the directly (for example power cord and power supply) or indirectly come into contact with mains voltage.

# Application and function description

## Product overview

Here you will find an overview of the product family of the SPM21xx and SPM22xx IC for 7 segment LED displays.

SPM2 x x x

- 1 Simple alarm function, the whole week is the same alarm time
- 2 Extended alarm function, the alarm time can be set separately on each day
- 0 One LED per segment in display, low LED current = dark
- 2 One LED per segment in display, average LED current = slightly dark
- 3 One LED per segment in display, higher LED current = bright
- 4 One to several LED's per segment in display, highest possible LED current = very bright
- 9 One to several LED's per segment in display, higher LED current = very bright
- 0 Without temperature display in alternation
- 1 With temperature display in alternation

## Function description

This IC can analyze the DCF77 signal, which is received by a receiver and demodulated. The received time and date can output directly to a 7-segment displays.

The DCF77 signal is a low frequency radio signal which transferred the time and date. It will be sent in Frankfurt am Main, derived of the local atomic clock and sent with the carrier frequency of 77.5 kHz. Therefore, these watches are also known as radio clock.

The input for the DCF77 antenna can now automatically detect whether a pullup resistor is required and whether the input has to be inverted.

With this IC an advanced alarm clock function is implemented. In this each day can be set individually.

This IC has the new **OnChip FullMultiPlex Display technology**. With this technology also small very weak displays can work and the displays are generally brighter.

This IC also has an adjustable brightness control for the display, thereby the display is easy to read during the day and at night it does not light out the entire room.

This IC has a bootloader, which allows you to update the IC firmware. This means that you will always remain at the current state of the Firmware for the IC, without further costs.

## Alarm Function

With the extended alarm function in menu, for each day of the week, the alarm time and if the alarm is activated can be set. Furthermore, there are the groups week and weekend to simplify the adjustment work.

In the menu the alarm and the snooze time can be set. With the adjusted snooze time the alarm waits if the alarm is not stopped at a wake-up call, but the snooze function is activated. The maximum alarm time can be adjusted between 2 and 60 minutes.

The alarm can be activated and deactivated with the keys S3 and S4 outside the menu. S3 activates the alarm and S4 deactivates this. If the wake-up call is active with S1 or S2 the alarm clock can be stopped and with S3 or S4 the snooze function will be activated.



### Dissembled time

Because the DCF clock daily synchronized with the current DCF time, it is possible that in worst cases, an incorrect time is read and therefore the wake-up call comes at a wrong time! Therefore, the time synchronization should eventually be placed in a time of day where it is possible to check the correct time before sleeping, if the alarm function is used.

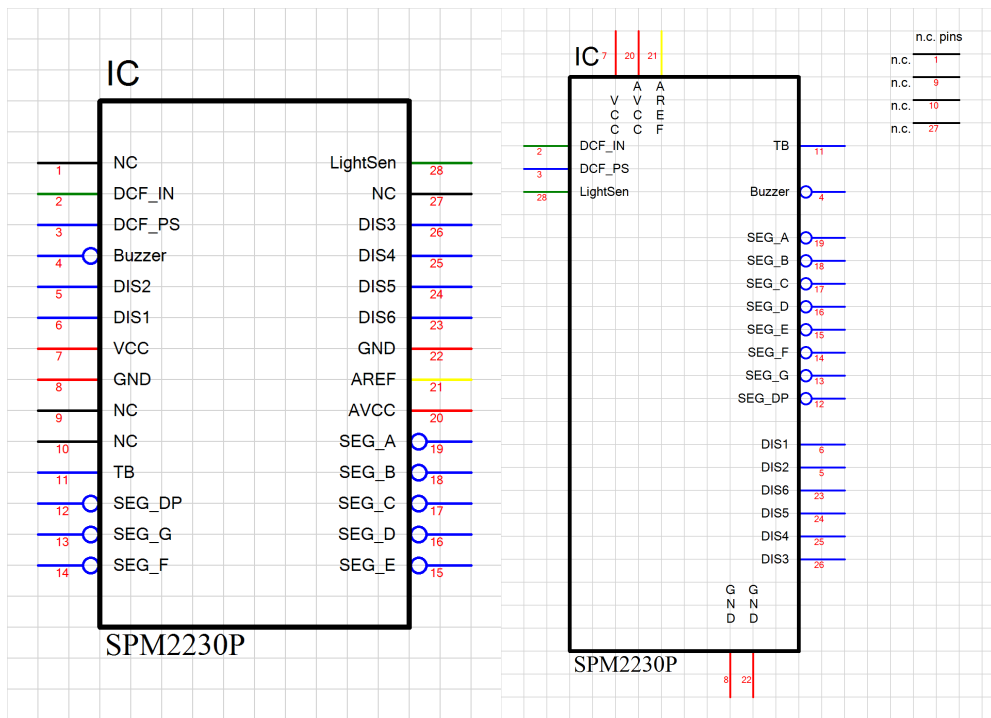
Note: At this IC, there are no simple alarm function as described in the data sheet SPM21xx.

## Technical data

- Voltage (VCC): 3 V - 5 V
- Current: 20 mA (at 5 V)
- Power: approximately 100mW (at 5 volts)
- Number of Pins: 28
- Display Power: directly to the controller is the maximum LED current 40mA

- Clock frequency: 8MHz
- Other properties, refer to the datasheet for Atmel® ATmega8, ATmega88, ATmega168, ATMEGA168P, ATmega328P

# Construction description



## Pin assignment

### Reset

Reset input to reset the microcontroller is normally not required. In case of higher EMC requirements a 100nF capacitor should be soldered to ground!

### VCC

Operating voltage (3 V - 5 V)

### AVCC

Analog operating voltage ( $VCC \pm 0.3 V$ ), there should be a coil with about 10 $\mu$ H connected between VCC and AVCC.

### AREF

Internal analog reference voltage should be blocked with a 1 nF ceramic capacitor

### GND

Ground

### Q1, Q2

The connecting of the 8MHz quartz is shown in Figure 1

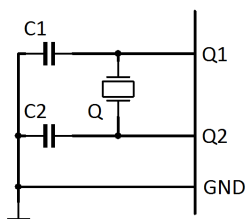


Figure 1: Connection of quartz

C1 and C2 are 27pF ceramic capacitors Q is an 8MHz

**N.C.**

Do not connect, connect to no other signal!

**DCF ps**

DCF Modules Enable pin, this pin enables the DCF modules when needed. Whether the pin is LOW or HIGH active can be set in the menu.

**DCF in**

Input for the DCF77 antenna. Inverting can be adjusted automatically or manually. Pull up resistor can be switched on in the menu.

**DIS1 to DIS6**

The respective anode 7-segment display. DIS1 is the tens of hour and DIS6 the ones digit of seconds. Should be wired as in the wiring diagram of the basic circuit.

**SEG\_A, SEG\_B, SEG\_C, SEG\_D, SEG\_E, SEG\_F, SEG\_G, SEG\_DP**

Cathode connections for the driver of the LED segments from the 7 segment displays. Furthermore keys are connected to Seg A, Seg B, Seg C, Seg D.

**Buzzer**

On this connector a buzzer can be connected as an acoustic alarm optional. The plus pole must be connected to VCC pin of the buzzer, the minus pin must be connected with GND.

**LightSen**

Analogue input for a light sensor.

**TB**

Tap to verify the accuracy of the time base, min. 0,999 99 kHz and max. 1.000 01 kHz, the larger is the different from the 1 kHz the less accurate the IC. Production pin. You may adjust quartz capacitors.



# Basic circuit

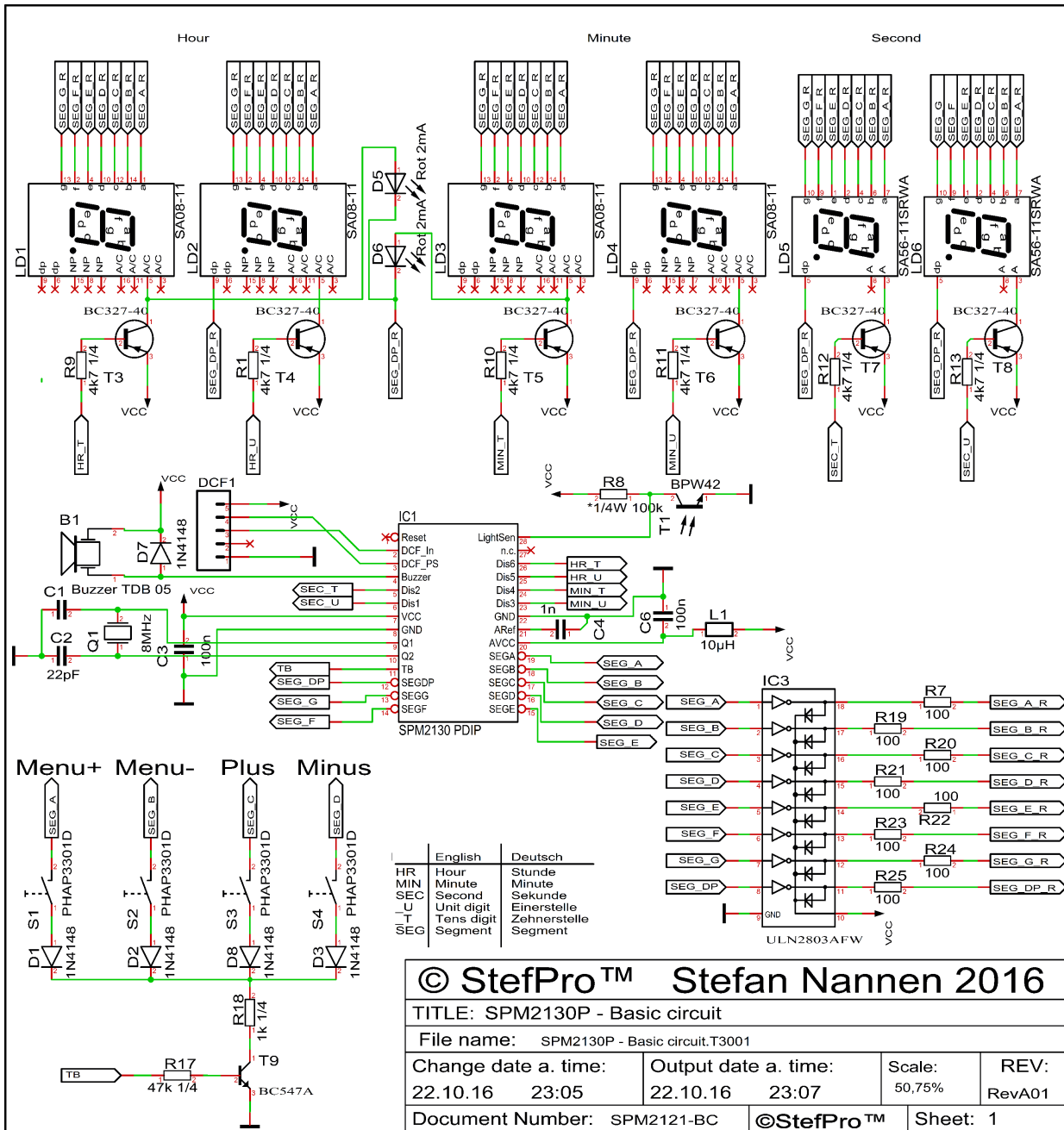
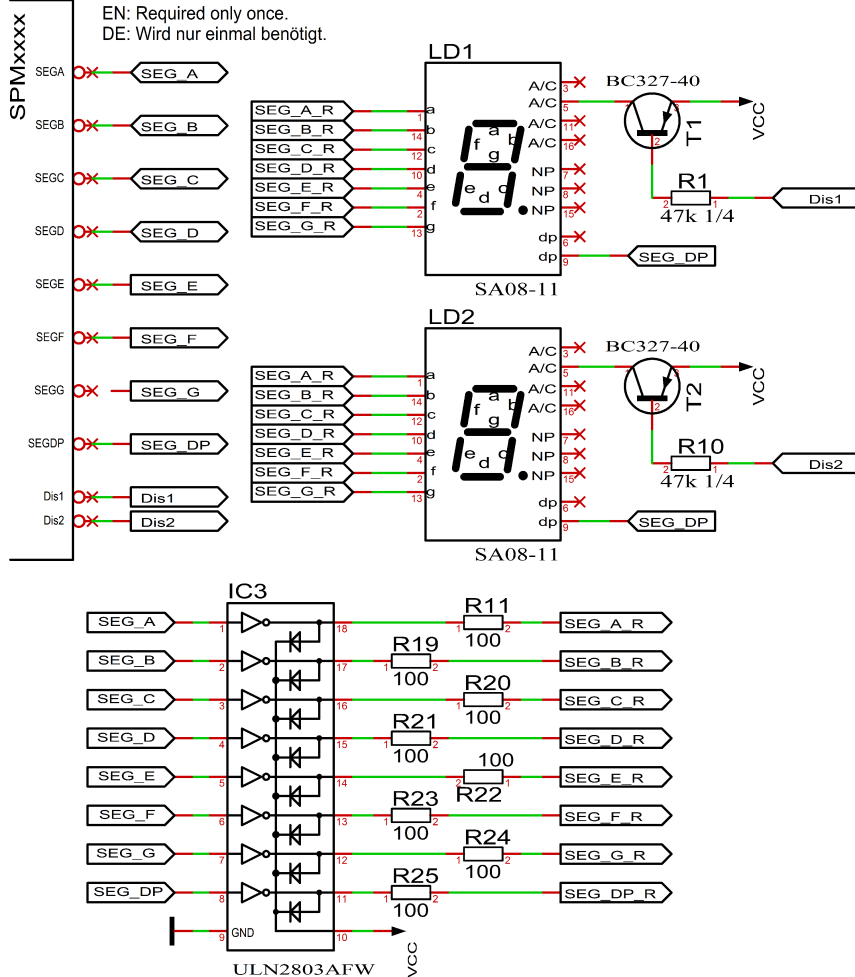


Figure 2: Basic circuit of SPM2230P

# Properties of the components

## Transistor array

For the sake of convenience, a transistor array is used for drive the cathode, in this case it is the ULN2803. The current and voltage amplifier for the LED's may also be constructed totally discrete and another transistor array may be used. An additional transistor array is used for the anode, the TD62T83AF is unfortunately terminated. If you using any other transistor arrays, the suitability for current and voltage load needs to be checked.



## 7 segment displays

The seven-segment display LD1 must have a common anode. The anode is driven by a transistor which must withstand at least 100 mA on the CE track. Via R1, the brightness of the LEDs of each display can be adjusted in limits. It should be noted that with direct control by SPM2230P the maximum current in SEG\_A SEG\_DP is 20 mA. R2 to R9 are the LED resistors, these are for example a 6 digit display used just once. The resistors are connected to the IC. The other displays are to be wired in the same way. Because of the higher current, it is also necessary to buffer the cathode via a transistor.

## Checked displays

Manufacturer no. Hersteller-Nr.	Manufacturer Hersteller	Color Farbe	Current Strom	Brightness Helligkeit
0.39 in - 10 mm				
SA 39-11 SRWA	KINGBRIGHT	Red- Rot	32mA	✓
SA 39-11 GN	KINGBRIGHT	Green- Grün	28mA	✓
0.52 in - 13,3 mm				
SA52-11SRWA	KINGBRIGHT	Red- Rot	32mA	✓
SA52-11LSRWA	KINGBRIGHT	Red- Rot	32mA	✓
SA52-11EWA	KINGBRIGHT	Red- Rot	30mA	✓
SA52-11YWA	KINGBRIGHT	Yellow- Gelb	29mA	✓
SA52-11LYWA	KINGBRIGHT	Yellow- Gelb	29mA	✓
SA52-11GWA	KINGBRIGHT	Green- Grün	28mA	✓
SA52-11LGWA	KINGBRIGHT	Green- Grün	28mA	✓
SA52-11QBWA-D	KINGBRIGHT	Blue- Blau	10mA	✓
LTS-546AP	Lite-On	Red- Rot	~30mA	✓
TDSR5160	Vishay Semiconductors	Red- Rot	~30mA	Testis still pending - Test steht noch aus

TDSG5150	Vishay Semiconductors	Green- Grün	28mA	✓
<b>0.56 in - 14,2 mm</b>				
SA 56-11 EWA	KINGBRIGHT	Red- Rot	32mA	✓
SA 56-11 GWA	KINGBRIGHT	Green- Grün	28mA	✓
<b>0.8 in - 20,32 mm</b>				
SA08-11SRWA	KINGBRIGHT	Red- Rot	32mA	✓
SA08-11EWA	KINGBRIGHT	Red- Rot		Testis still pending - Test steht noch aus
SA08-11YWA	KINGBRIGHT	Yellow- Gelb	29mA	✓
SA08-11GWA	KINGBRIGHT	Green- Grün	28mA	✓
SA08-11PBWA	KINGBRIGHT	Blue- Blau	10mA	✓
HDSP-8601	Agilent	Green- Grün	28mA	✓
<b>2.3 in - 56,9 mm</b>				
SA23-12SRWA	KINGBRIGHT	Red- Rot	-	Testis still pending - Test steht noch aus
SA23-12EWA	KINGBRIGHT	Red- Rot	-	Testis still pending - Test steht noch aus
SA23-12YWA	KINGBRIGHT	Yellow- Gelb	-	Testis still pending - Test steht noch aus
SA23-12GWA	KINGBRIGHT	Green- Grün	-	Testis still pending - Test steht noch aus
<b>4.0 in - 100 mm</b>				
SA40-19SRWA	KINGBRIGHT	Red- Rot	-	✗ (impossible- unmöglich)
SA40-19EWA	KINGBRIGHT	Red- Rot	-	✗ (impossible- unmöglich)
SA40-19YWA	KINGBRIGHT	Yellow- Gelb	-	✗ (impossible- unmöglich)
SA40-19GWA	KINGBRIGHT	Green- Grün	-	✗ (impossible- unmöglich)

- ✓ **Works fine** - Funktioniert perfekt
- — **Works but not fine** - Funktioniert, aber nicht zu empfehlen
- ✗ **Doesn't work** - Funktioniert nicht
- ✗ **Not tested, would not work directly** - Nicht getestet, da nicht direkt möglich.

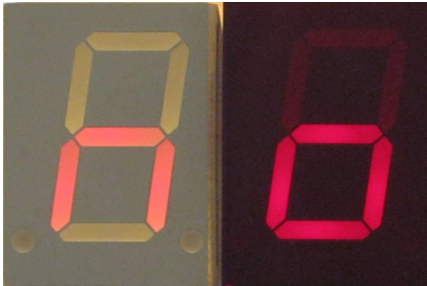


Figure 5: SA08-11SRWA left without and right with contrast pane with back light.

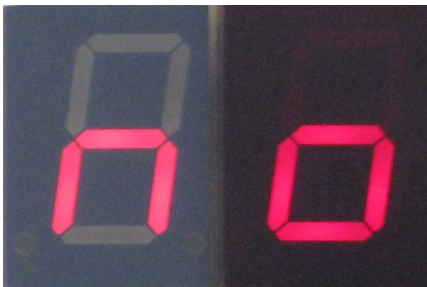


Figure 6: SA08-11SRWA left without and right with contrast pane without back light.

Below with and above without back light.

Because the displays are full multiplexed (all eight LEDs light up to a maximum of 10  $\mu$ s), almost all 7 segment displays with one LED per segment can be used.

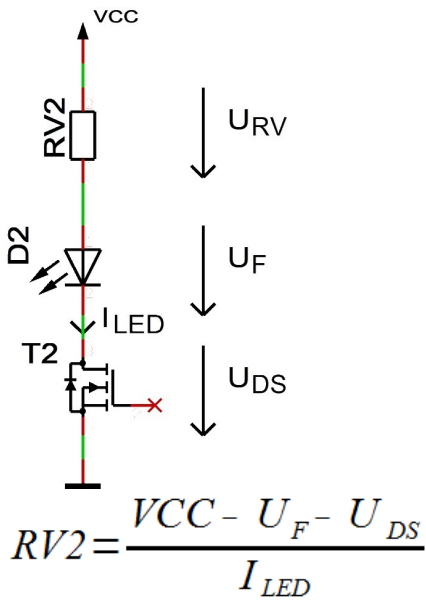
Also note, that the displays which can work with 10 mA constant current, not implicitly work with 10 mA pulsed current. All displays have been limited with a 100 ohm resistor.

The brightness of the display is intended for the brightness ratios in a living room or laboratory. Since the circuit is not optimized for minimum component and power requirements, the readability for direct exposure to headlights or sunlight is okay even without contrast panel.

It is recommended to place a contrast panel in front of the display, see figure 6 and 5.

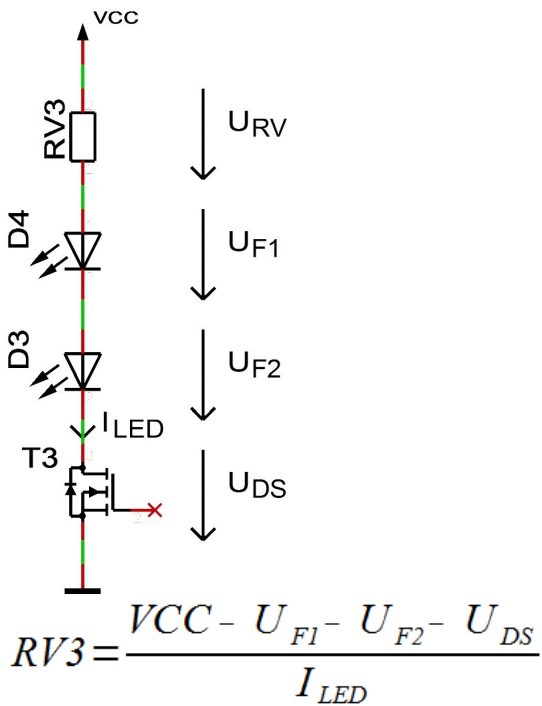
Note: The menu is always displayed with 100% brightness.

### Calculate the series resistor for one LED



- $U_{DS} \approx 0$
- $I_{LED} < 35 \text{ mA}$

**Calculate the series resistor for two LED**

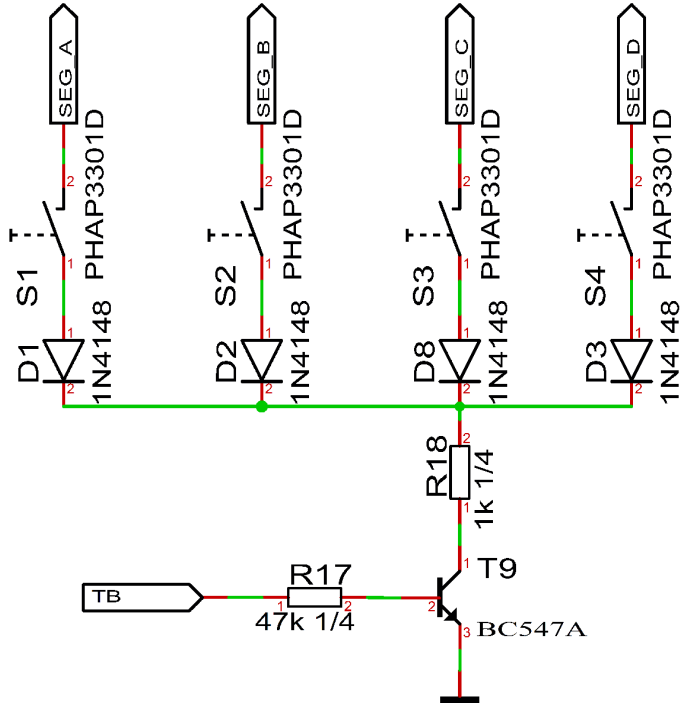


- $U_{DS} \approx 0$
- $I_{LED} < 35 \text{ mA}$

**Keyboard**

The keyboard consists of three to four buttons. It is expressly recommended to use digital compatible switches. The diodes D1 to D4 are for blocking display faults when pressing 2 and more keys. T1 and R2 prevent that a segment lights up when pressing a button. The remote control of the controller is simply possible by parallel adding or replacing the button with NPN transistors.

## Menu+ Menu- Plus Minus



### DCF module properties

- The module has to be able to work with an operating voltage of 5V (some modules have an operating voltage range of 1.2 to 15 volts, these are also usable)
- The output has to be able to drive a CMOS input with a input impedance of 10kΩ
- For DCF modules with open collector (open collector) or open drain output the input detected automatically by default whether a pull-up resistor is required. In menu a pull-up resistor can be connected or disconnected permanently.
- Polarity of the output:
  - The output has to be non inverting, the high state has to be 100ms or 200ms
  - The output has to be inverting, the low state has to be 100ms or 200ms
  - The receiving LED should at good reception signal flash every second for 100 ms and 200 ms. Does the receiving LED goes off every second for 100 ms and 200 ms, then the polarity is wrong. Unfortunately, you then connected a wrong module, this can't be analyzed with the microcontroller.
  - Whether the output is non inverting or inverting, is detected automatically by default or can be set in the menu.
  - The receiving LED should at good reception signal flash every second for 100 ms and 200 ms. Does the receiving LED goes off every second for 100 ms and 200 ms, then the polarity is wrong. To correct this, you has to be invert the setting for the inverting DCF input pin in the menu. (Instead of on → off → on or off)
- The DCF module can have a power on / off pin. Then the DCF module is automatically switched off when the DCF signals from the microcontroller are not analyzed. In the menu can be set if the DCF module is with low or high on.

### Tested modules

Module	GND	VCC	DCF input	PowerSave output	Comment
Conrad DCF Modul	1 (GND)	2 (Betriebs...)	3 (DCF Ausgang)	-	
ELV DCF Modul	3 (Masse)	1 (+ UB)	2 (Signal-Ausgang)	-	
Pollin DCF Modul	GND	VCC	DATA	PON	Caution An additional circuit is required for an operating voltage of more than 3.3V!

### Our standard color coding for DCF signals

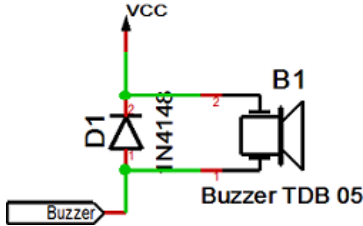
- GND: black
- VCC: rot
- DCF input: green
- PowerSave output: white ( is not supported by each DCF receive module )

#### WARNING

Please check the pin assignments! It is not in our hands whether the manufacturers of the DCF receive modules change the pin assignments at a later date.

### Buzzer properties

The buzzer B1 must be self-producing and have a minimum voltage of VCC. Does the buzzer have not VCC, a series resistor have to be installed. The buzzer may further maximum of 40mA directly from the IC SPM2230P. The plus pole of the buzzer have to be applied to VCC and the minus pin of the buzzer have to be connected to the IC. D1 is the idle diode when operating with coils.

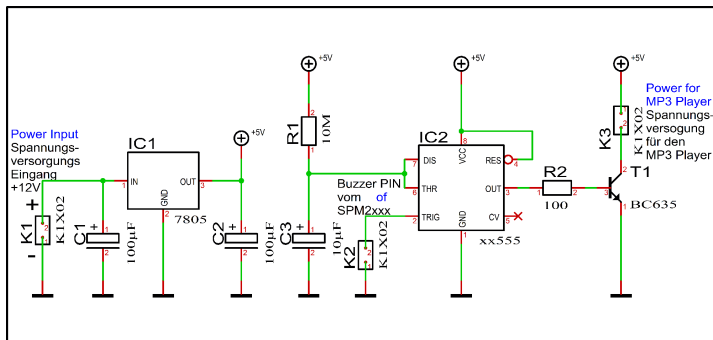


### Buzzer to MP3 player

If an MP3 player is to be used instead of a self-exciting buzzer, a small circuit must bridge the signal off time.

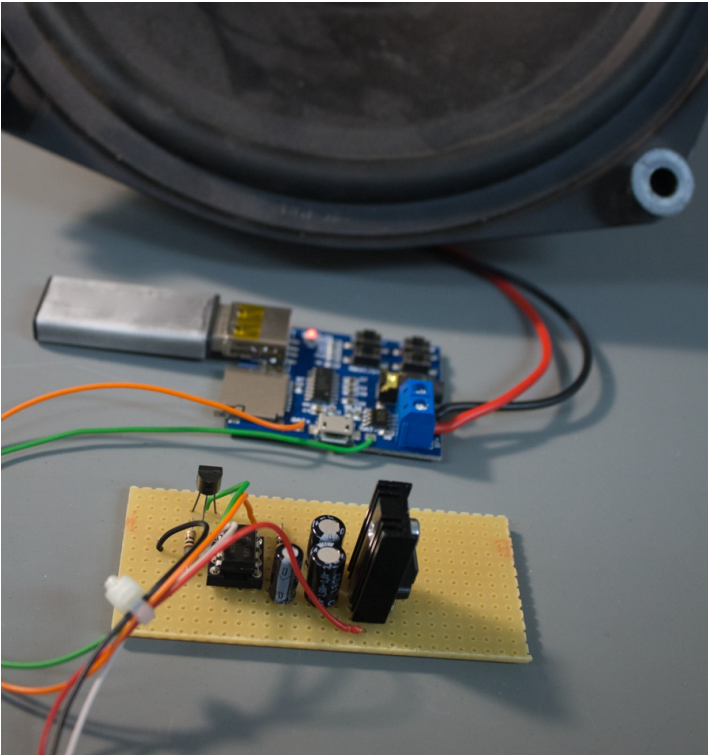
This is possible with this very simple circuit, with a NE555, build-up as a retriggerable mono-flop.

Furthermore, there is a small power supply for the MP3 module, because most of the imported modules requires a voltage supply of 5 volts. The current is still acceptable with a connected 4 Ohm loudspeaker for a 7805 with heat sink and a current of 200 to 500 mA, since the alarm shouldnot play for more than 30 min. However, it is also possible to use a PIN compatible DCDC converter by different manufacturers.



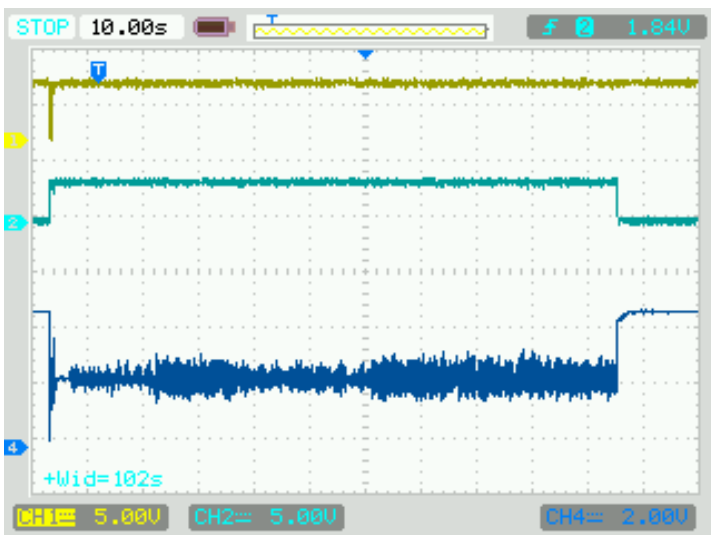
© StefPro™ Stefan Nannen 2016			
TITLE: Buzzer2MP3			
File name: Buzzer2MP3.T3001			
Change date a. time:	Output date a. time:	Scale:	REV:
11.12.16 11:00	11.12.16 11:09	220,89%	RevA01
Document Number: SPM2100-B2MP3	©StefPro™	Sheet: 1	

Combination R1 and C3 gives a mono time of approx. 2 min.



Colors of thin wires:

- red: plus supply voltage ( $\leq +12$  Volt)
- black: minus supply voltage
- white: Buzzer signal from the IC SPM2230P
- orange: plus MP3 Player Module (+5 Volt)
- green: minus MP3 Player Module



Colors of the signals:

- yellow: Trigger signal
- light blue: MP3 Player Power Supply
- dark blue: Output from the MP3 Player

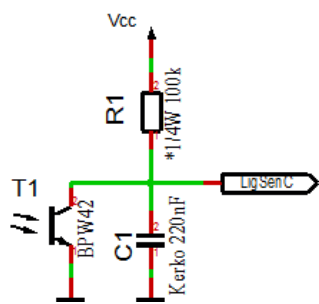
### Properties of light sensor with Phototransistor

The light sensor is used to control the brightness of the display.

As light sensors many phototransistors are suitable, in the example circuit a BPW42 is used.

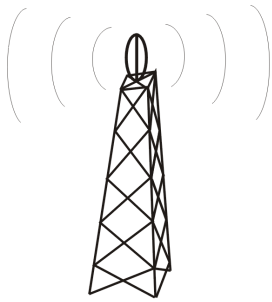
If another phototransistor is used, may you need to change the value of the pull-up resistor R1. The menu allows to adjust the calculation factor, offset and the control speed.

If the sensor is mounted behind a contrast panel, it must be taken to ensure that the wavelength of the phototransistor can pass through the contrast screen.





# Installation the DCF clock



Sender in Frankfurt



DCF77-Antenne

Figure 7: Align the DCF antenna

The external antenna receives the DCF77 signal and should be directed to Frankfurt, as shown in Figure 7. The antenna should be placed at least 1 meter away from a monitor, computer or other disturbing electronic devices .

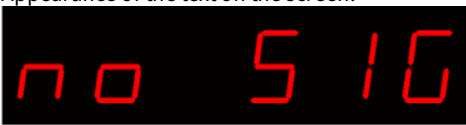


During installation, the receiving LED can be used as an orientation to the quality of reception. The LED should flash at intervals of one second. If the antenna is properly aligned and the signal is strong enough, the display changes of "no signal" (No impeccable DCF77 signal) in "SEArCH" (search for the 59th second). Was the 59th second found so will the display shows "rEAd60" (read the DCF time) henceforth. It still takes 60 seconds to display the correct time. If the clock is not synchronized to the DCF time, the receiver LED flashes DCF work cycle (power reserve is in operation), if the LED is enabled in the menu. Is the display not changed to "SEArCH", the antenna is probably disturbed by a device or the antenna is too close to the display. Because the DCF antenna is so sensitive that it can disturb by the display in the near field, there is the possibility to reduce the brightness of the display during the synchronization, or to deactivate the display. This problem have all other DCF clocks with multiplexed LEDs displays also. By a darker display the DCF antenna can be mounted significantly closer to the display.

## Synchronize with active display

This mode is active when in menu under "receive brightness" the brightness is set > 0.

Appearance of the text on the screen:



"no Sig" no signal.



"SEArCH" Search the fifty-ninth second.



"rEAdxx" read the dcf time.

## Synchronize with deactivated display

This mode is active when in menu under "receive brightness" the brightness is set to 0.

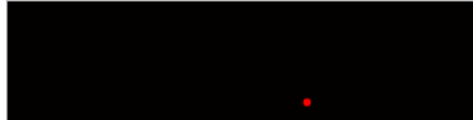
When synchronizing with disabled display, only one decimal point for orientation appears.



"no Sig" no signal.



"SEArCH" Search the fifty-ninth second.



"rEAdxx" read the dcf time.

# Button description

## Menu

### Level 1

### Level 2

Normal↓

Display mode of clock↓

Alarm↓

Alarm day selection → Alarm enable → Alarm time hour → Alarm time minute → Alarm snooze time → Alarm sound wait time → Alarm maximum time → Alarm exit ↺

Brightness↓

Brightness menu → Brightness max → Brightness min → Brightness automatically → Brightness speed → Brightness factor → Brightness offset → Exit brightness settings ↺

DCF↓

Receiving brightness → Receiving brightness → Receive state display → DCF input pull up → DCF input invert → Power save pin invert → DCF sensitivity → DCF exit ↺

Clock Settings↓

Set hour → Set minute → Set year → Set month → Set day → → Set time → Exit clock settings ↺

Info section↓

IC number↓

Firmware version↓

↓: Next step in main menu.

→: Next step in sub menu.

↺: The submenu starts again.

## Normal



Normal mode, outside of the menu.



Here the + button has the function of the alarm temporary switch on or off.



The - button Switches the display to 100% (flashlight).



## Display mode of clock



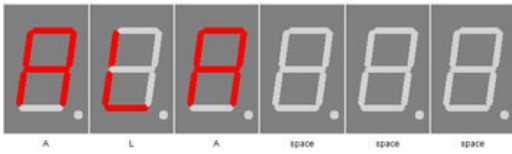
Sets the mode how to display time and date.



- ti: Shows only the time.
- dA: Shows only date.
- td: Shows time and date alternately.



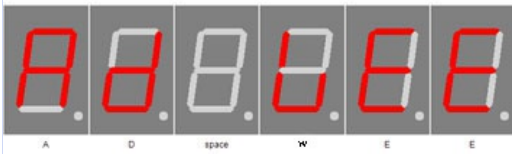
## Alarm



ALARM

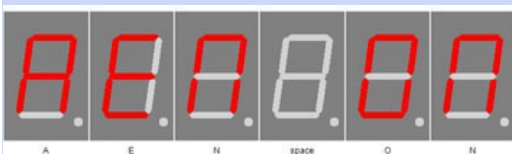
With + you enter the sub-menu Alarm.

### Alarm day selection



Select which day or which group you want to set. There are the group Week (WEE) and weekend (wnd). Saturday and Sunday are in the group weekend, all other days are in the group week. Through these groups, it is possible to set the alarm for several days at once. If the alarm is active for the week, so the weekdays can no longer be adjusted individually and inheriting the groups setting. A decimal point indicates whether the alarm on the day or group is active.

### Alarm enable



ALARM ON



ALARM OFF

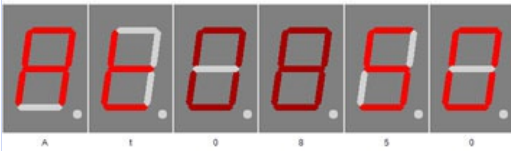
Enables the alarm.

**Alarm time hour**



Sets the hour for alarm. The number can be 0-23

**Alarm time minute**



Sets the minutes for alarm. The number can be 0-59

**Alarm snooze time**



Sets the minutes for the snooze function. The number can be 1-30

**NOTICE**

If "alarm maximum time" is shorter than alarm snooze time, the snooze function is disabled!

**Alarm sound wait time**



Sets the maximum time in minutes for the alarm. The number can be 0-10.

**NOTICE**

If "Alarm sound delay" greater selected as maximum alarm time, then the display is only set to 100% brightness! No buzzer alarm!

**Alarm sound delay**

**Alarm maximum time**



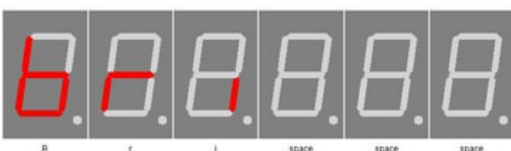
Sets the maximum time in minutes for the alarm. The number can be 2-60.

**Alarm exit**



With + you exit the sub-menu alarm.

**Brightness**



Brightness

With + you enter the sub-menu brightness.

**Brightness menu**



Brightness

Sets the brightness of the menu. The number can be 10-25

**Brightness max**



Brightness high

In this menu item, the maximum brightness of the display can be adjusted.

This is also used when auto brightness is disabled.

The number can be 0-25

**Brightness min**



Brightness low

In this menu item, the minimum display brightness can be adjusted.

The number can be 0-25

**Brightness automatically**



Brightness automatically on



Brightness automatically off

This allows to turn on and off auto brightness.

**Brightness speed**



Brightness speed

This sets the speed of auto brightness.

The number can be 0-10

**Brightness factor**



Brightness factor

This sets the calculation factor for auto brightness.

The number can be 1-99

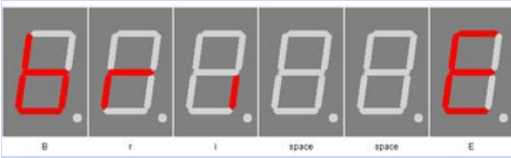
**Brightness offset**



Brightness offset

This sets the calculation offset for auto brightness.  
The number can be -99 - 99

**Exit brightness settings**



With + you exit the sub-menu brightness.

**DCF**



DCF

With + you enter the sub-menu DCF.

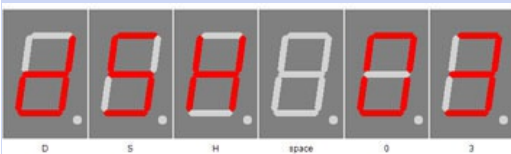
**Receiving brightness**



Receiving brightness

Sets the brightness during the DCF receiving. If 0, the display is turned off and the status of the synchronization is shown by decimal points. The number can be 0-25.

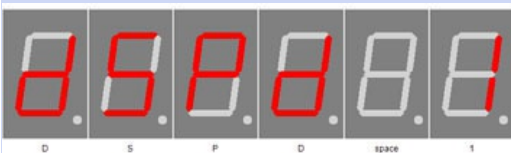
**Receiving brightness**



DCF synchronize hour

Sets the hour in which the DCF clock will synchronize. The number can be 0-23.

**Receive state display**

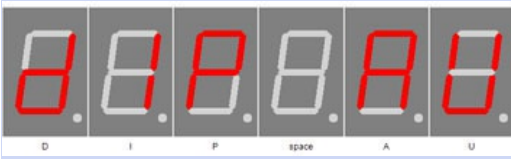


DCF status decimal point display

Sets the mode for the receive LED, which shows the received signal. The number can be 0-2.

- 0: Only until the clock has been synchronized.
- 1: Shows the received signal when the clock is not synchronized with the DCF77 signal.
- 2: Shows the received signal permanently on the receiver LED.

**DCF input pull up**



DCF input pull up auto



DCF input pull up on

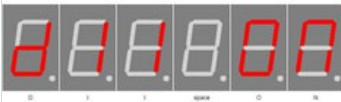


DCF input pull up off

**DCF input invert**



DCF input invert auto

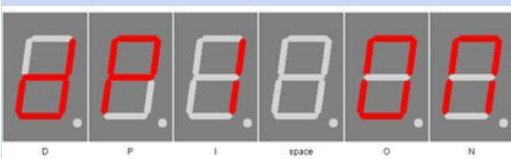


DCF input invert on



DCF input invert off

**Power save pin invert**

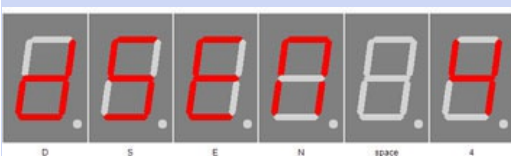


DCF powersave invert on



DCF powersave invert off

**DCF sensitivity**



DCF sensitivity

DCF77 input pin with pullup

- AU: Pull Up is automatically ( default ).  
AU is activated by pressing the + button.
- ON: Enables the pull-up resistor
- OFF: Disables the pull-up resistor  
ON and OFF is activated and toggled by the - button.
- Conrad DCF module = ON
- ELV DCF module = ON
- Pollin DCF module (3.3 V) = OFF

No guarantee for correctness of the information and changes of the manufacturer.

DCF77 inverting the input pin

- AU: input is automatically inverted or not (default).  
AU is activated by pressing the + button.
- ON: Input inverts
- OFF: no input inverted ON and OFF is activated and toggled by the - button.
- Conrad DCF module = for PIN3 ON, PIN4 OFF
- ELV DCF module = ON
- Pollin DCF module (3.3 V) = OFF

No guarantee for correctness of the information and changes of the manufacturer.

If the receive LED is off every second, the setting must be inverted.

Inverts DCF77 power On / Off output

- ON: Power ON / OFF output is inverted (module ON at GND)
- OFF: power on / off output is not inverted. (module ON at VCC)
- Conrad DCF module = No power on / off input pin available
- ELV DCF module = No power on / off input pin available
- Pollin DCF module (3.3 V) = ON

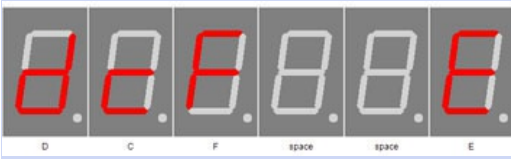
No guarantee for correctness of the information and changes of the manufacturer.

Read the instructions of the receiver module for the power on / off pin of the DCF module to set this setting correctly. Many modules do not have this pin, then this setting can be ignored.

Sets the DCF Sensitivity. 1 has a very low tolerance and 6 has the highest tolerance for reception. The Sensitivity should be set as small as possible to avoid incorrect receiving. The number can be 1-6



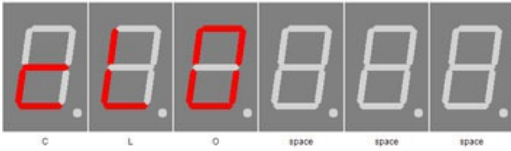
**DCF exit**



DCF Exit

With + you exit the sub-menu DCF

**Clock Settings**



With + you enter the sub-menu clock.

**Set hour**



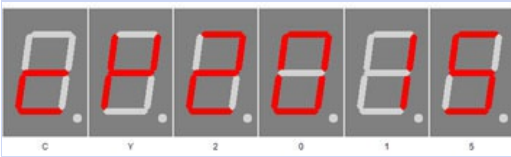
Set the hour.  
The number can be 0-23.

**Set minute**



Set the minute.  
The number can be 0-59.

**Set year**



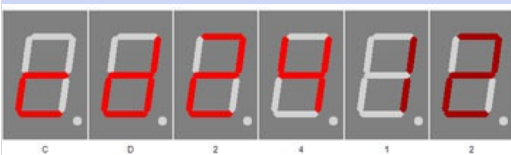
Sets the year.  
The number can be 2000-2099.

**Set month**



Sets the month.  
The number can be 1-12.

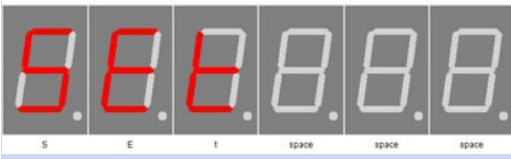
**Set day**



Set the day, limit by month.  
The number can be 1- 28, 29, 30, 31.

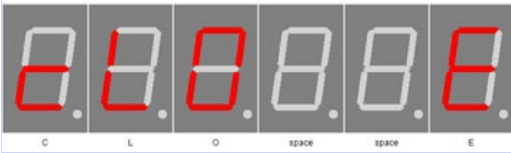
MISSING: MENU\_CODE\_L2\_DATECLOCK\_GET\_WDATE

**Set time**



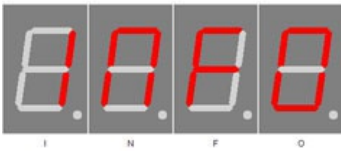
Sets the time, while looking for DCF time, otherwise the time will be provided directly.

**Exit clock settings**



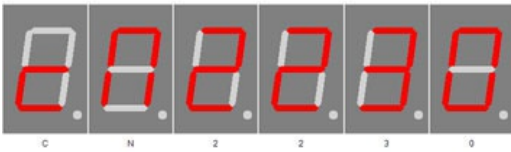
With + you exit the sub-menu clock. Until here the clock, without DCF synchronization, will be taken and used until the next scheduled synchronization.

**Info section**



This indicates the start the information area

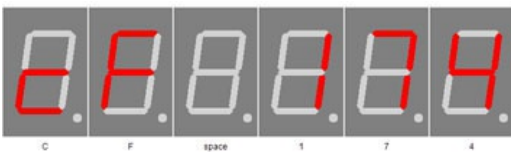
**IC number**



IC / device type

Chip number

**Firmware version**

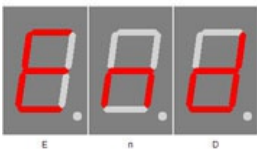


Firmware version

Example, it might be something else at this point.

Firmware version

**Menu end**



End of the menu, hide automatically after 2 seconds.

End

# Attachment

## Bootloader handling

### Start the IC/module/device in bootloader mode

1. Switch off the IC/module/device.
2. Connect the UART adapter (USB → 3.3 volts or 5 volts UART or RS232 → 3.3 volts or 5 volts UART).  
"DCF in" → UART adapter TXD and "DCF ps" → UART adapter RXD.
3. Press the button S1, power up the IC/module/device with voltage and do not release this button until you hear a short BEEP. The display is off.
4. Now you can connect to the firmware upload tool.



#### Wrong UART level

If an incorrect voltage level (for example directly RS232, ± 12 Volt) is used, the UART adapter or the IC/module/device can be damaged or destroyed. In the worst case, overheating and fire may occur!

#### NOTICE

#### Defect firmware

Defect firmware can be detected as follows: Every second a short BEEP.]]

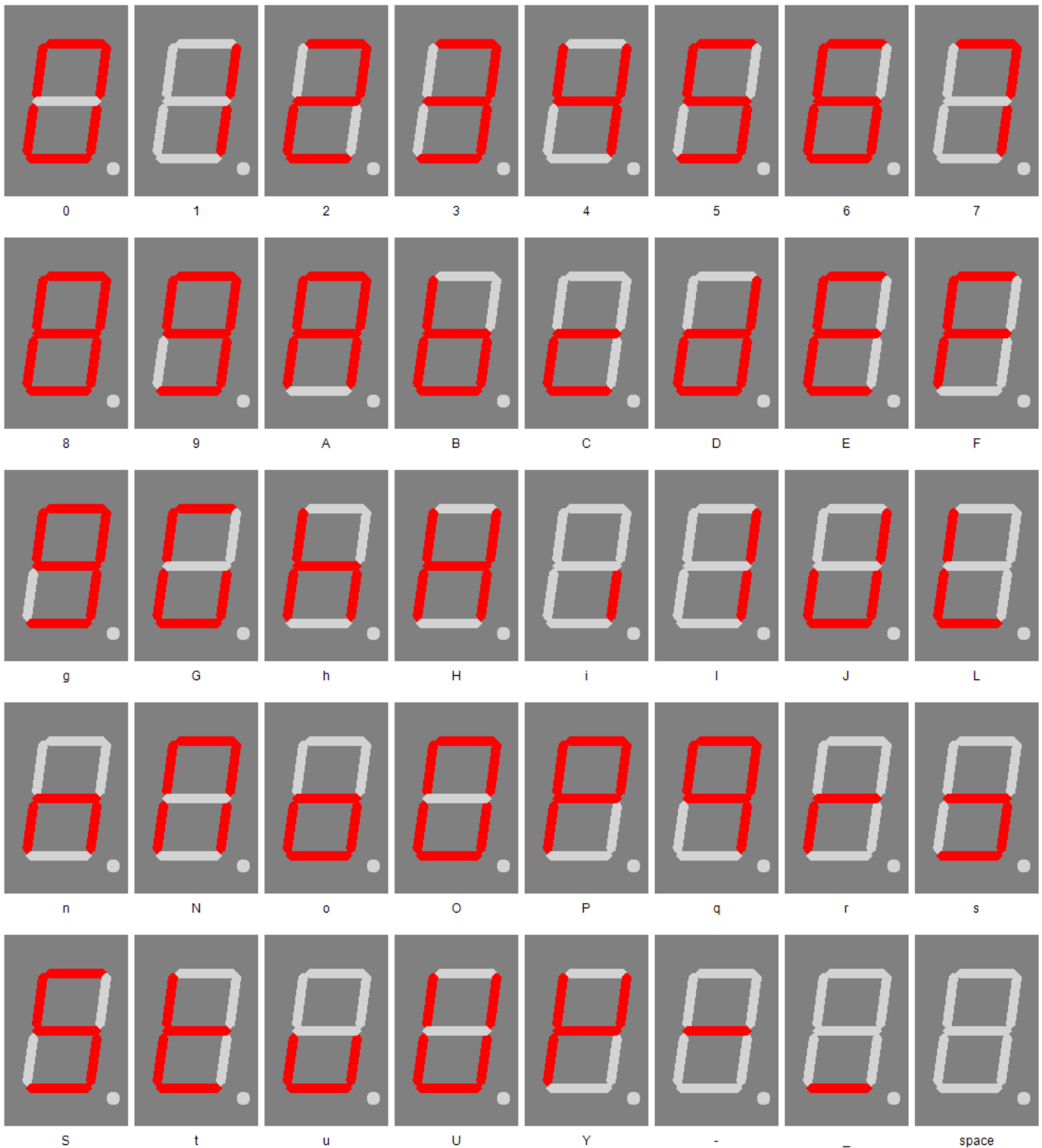
#### Use the Firmware Upload Tool to upload an update

1. Download the latest upload tool from [www.stefpro.biz](http://www.stefpro.biz): [SP Firmware UP](#)
2. Start the tool
3. Select the COM port.
4. Press the "Load" button and select a firmware which you have previously downloaded from SP Firmware UP
5. Now press the "Connect" button, the data from the IC / Module / device will be read and the compatibility of the new firmware with the IC / module / device will be checked
6. If an upload is possible, you can now press the "Upload Firmware" button. The upload starts and should not be interrupted.

[[NOTICE:Firmware upload interruption: If the firmware upload is interrupted or uploaded an inappropriate firmware, so there is a broken firmware, the IC can be operated only in bootloader mode.

## 7 segment characters

The symbolism of each character:



## Change log

### Safety

20.03.2017 - 1.0.3 - ADD  
Add ESD note

## **Product overview**

05.07.2017 - 1.0.5 - ADD  
Add Product overview

## **DCF module properties**

21.11.2016 - 1.0.1 - ADD  
Add list of tested modules  
20.03.2017 - 1.0.3 - ADD  
Update list of tested modules, add standard pin assingment

## **Buzzer to MP3 player**

09.12.2016 - 1.0.2 - ADD  
Add buzzer to mp3 player change description

## **Set day**

23.04.2017 - 1.0.4 - ERROR  
Bugfix wrong title, this sets the day not the month.

# Liability, warranty and copyright notice

## Definitions

- "Programmed IC": IC which was developed by StefPro and can only used with a minimum basic circuit.
- "Manufacturer of the whole device": The manufacturer of the whole device, the natural or legal person is mounted a device which can be made to function without special knowledge. E.G. Simple connection to the network via a euro, safety plug or by connecting to a power supply.

## Liability

- Although the information contained in this document has been checked very carefully for accuracy and completeness, for errors and omissions can not be held liable. StefPro reserves the right to any time change any portion of the described hardware and software features.
- StefPro delivers only the "programmed IC", a basic circuit and possibly an [example circuit](#), but these are not tested for CE and EMC. The "Manufacturer of the whole device" requires the valid VDE, CE and EMC is comply with regulations.
- There is no liability for damages incurred directly by or in the application of the "programmed IC", as well as for damage caused by chemical or electrochemical effects of water or generally from abnormal environmental conditions.
- "Programmed IC's" by StefPro may not be used in critical equipment. At disregard exclusively the responsibility of "Manufacturer of the whole device."

These include:

- medical devices for implanting or life obtained.
  - Critical equipment for space, aerospace and traffic.
  - Other important life components or systems, where an error is fatal.
- All developed with a "programmed IC" by StefPro modules and devices must be the responsibility of the "Manufacturer of the whole device" sufficiently tested to detect any defects.

## Warranty

- StefPro warranty only for the programmed IC and their firmware. The warranty is exclusively limited for the replacement of the IC within the warranty period for obvious defects in the hardware, and programming error.
- Warranty does not extend the warranty period or starts a new period again.
- Additional or deviating claims are excluded, especially claims for damages arising out of the product for damage. This will not affect claims based on inalienable rules under the product liability law.

## Copyright notice

The circuitry and firmware from StefPro is protected by copyright.. Unauthorized reproduction or distribution of programmed IC's with this program or any portion of it. This is pursued both criminal and civil law, and may result in severe penalties and compensation for damages.

## Disposal information

Do not dispose devices in household garbage!

This modules or devices comply with the EU directive on electronic and electrical equipment (WEEE regulation) and therefore may not be disposed of with household waste. Dispose of the device over your local collection center for electronic equipment!



WEEE-Reg.-Nr.:

DE 58929072 ( StefPro UG (haftungsbeschränkt) & Co. KG )

DE 78089358 ( StefPro Einzelunternehmen bis zum 01.01.2015 )

## Impress

### **StefPro™ UG (haftungsbeschränkt) & Co. KG - Softwareentwicklung für Prozessoren**

Dipl. Ing. (FH) Stefan Nannen

Theilenmoorstr. 11

26345 Bockhorn – Germany

Phone: +49-4452-709175

Web:<http://www.stefpro.biz/>

E-mail: [info@stefpro.biz](mailto:info@stefpro.biz)