

# SPK2141.02

Assembly kit - Six digit dcf clock

for 6x100mm 7 segment SA40 LED displays  
and temperature

Assembly plan for the kit

Version: Firmware 1.82-148



**StefPro UG (haftungsbeschränkt) & Co. KG**  
Theilenmoorstr. 11  
26345 Bockhorn, Germany

Phone: +49-4452-709175  
Web: <https://www.stefpro.biz/>  
E-mail: [info@stefpro.biz](mailto:info@stefpro.biz)

Assembly plan version 2.0.1 - Valid from 22.03.2021.

## Table of Contents

Table of Contents	2
Safety	4
Application and function description	5
Function description	5
Alarm Function	5
Technical data	5
Bill of material	9
Basic assembly	10
Assembly plan with reference	10
Assembly with SA40-19 display by Kingbright	10
Assembly with KW1-4001AWB display by Lucky Light	11
Assembly plan with values	13
Assembly with SA40-19 display by Kingbright	13
Assembly with KW1-4001AWB display by Lucky Light	15
Assembly in 3D representation	17
Connectors	22
X-DC : DC Power input : Print plug 2 pole	22
X-DCF : DCF input, DCF PowerSave output: Print connector 5 pin	22
X-DIS-SPI-OUT : DISplay output1, SPI : MicroMatch 10 Polig	22
X-DIS-SPI-IN : DISplay input1, SPI : MicroMatch 10 Polig	23
Properties of the components	24
7 segment displays	24
Possible displays	24
Effect of an acrylic glass	24
Calculate the series resistor for one LED	25
Calculate the series resistor for two LED	25
DCF module properties	25
Tested modules	26
Our standard color coding for DCF signals	26
Connection of the DCF module using a fake module	26
Without Power On / Off or Power Save input	26
With Power On / Off or Power Save input	27
Power supply properties	27
Quartz - Accuracy of the time	28
Buzzer to MP3 player	28
Properties of light sensor with Phototransistor	30
Temperature sensor	30
Method of calibration with a temperature value	30
Procedure for calibration with an offset value	31
Installation the DCF clock	32
Synchronize with active display	32
Synchronize with deactivated display	32
Emitted electrical disturbances by the display	34
Test setup	34
Measurement results	34
Button description	36
Overview of buttons	36
Button functions	36
General key functions	36
Menu	36
Normal	37
Display mode of clock	37
Show Temperature	38
Alarm	38
Alarm enable	38
Alarm time hour	38
Alarm time minute	38
Alarm snooze time	39
Alarm sound wait time	39
Alarm maximum time	39
Alarm exit	39
Brightness	39
Brightness menu	39
Brightness max	39

Brightness min	40
Brightness automatically	40
Brightness speed	40
Brightness factor	40
Brightness offset	40
Activate standby	41
StandBy start hour	41
StandBy end hour	41
StandBy Brightness	41
Exit brightness settings	41
DCF	41
DCF active	42
Receiving brightness	42
Hour of synchronization	42
Receive state display	42
DCF input pull up	42
DCF input invert	43
Power save pin invert	43
DCF sensitivity	43
DCF exit	43
Clock Settings	43
Set hour	44
Set minute	44
Set year	44
Set month	44
Set day	44
Day of week	45
Set time	45
Calibrate quartz	45
Exit clock settings	45
Info section	46
IC number	46
Firmware version	46
Menu end	46
Attachment	47
Bootloader handling	47
Start the IC/module/device in bootloader mode	47
Use the Firmware Upload Tool to upload an update	47
7 segment characters	48
Change log	48
Safety	48
DCF module properties	48
Power supply properties	49
Buzzer to MP3 player	49
Temperature sensor	49
Set day	49
Liability, warranty and copyright notice	50
Definitions	50
Liability	50
Safety Notes	50
Intended operation	50
Warranty	50
Copyrightnotice	51
Disposal information	52
Impress	52

## Safety

### Follow the manual



This assembly kit is only safe in operation if all instructions are read in this datasheet.

The assembled kit is called in the following module.

### General understanding of safety

By the module there are no hazard under normal use.

### Intended Use

The module is designed for driving big displays.

### Concealed Hazards

- When handling tools such as side cutter, pliers and soldering iron there is a risk of injury. Look for a safe handling and do not touch the hot soldering iron or just heated solder joints.
- The pins of the components are very pointed and sharp! Therefore, this may cause in sores in case of incorrect handling.
- The pins of the components can be pointed and sharp even after installation! Therefore, this may cause in sores in case of incorrect handling.
- Spalling of parts on reverse polarity or overloading of the module.



Wear during the initial commissioning eye protection.

- If the buzzer emits more than 90 dB, it may cause hearing loss over a long period of time. The circuit board is intended for installation in a housing, thereby lowering the level of the buzzer used.
- Use always passing a ESD bracelet to avoid electric charges! The module can be damaged if handling without an earthing tape and housing! The power should come from a safe transformer (also protected transformer) or a corresponding low voltage power supply for the circuit. Never use a higher voltage or direct mains voltage!



DANGER

following hazards may arise in case of wrong construction of the circuit and wrong handling of module:

- With the direct connection to mains, it's a dangerous voltage on the module and other components, use a safety transformer!
- Reverse polarity and overloading the module may cause in smoke. This smoke possibly contains toxic substances which must not be inhaled! Ventilate the room.
- Reverse polarity or overload of the module can cause a hot surface on the IC or other component in the circuit.
  - There is a risk of burning when touching.
  - And flammable materials, for example Paper, can come in fire.

### Modifications of the example circuit

The successfully built device may be damaged. Therefore check as appropriate all housing part and lines for damage. This applies in particular to parts of the directly (for example power cord and power supply) or indirectly come into contact with mains voltage.



# Application and function description

## Function description

This IC can analyze the DCF77 signal, which is received by a receiver and demodulated. The received time and date can output directly to a 7-segment displays. The clock synchronizes itself automatically once a day. The hour of the synchronization can be set in the menu.

The time is displayed according to DIN 5008, which means a leading 0 at the hour. 8 a.m. looks like 08:00:00 and 8 p.m. 20:00:00

Due to the 6-digit display, the date is not shown according to DIN 5008. The 24 December 2020 looks on the display like 24.12.20.

The DCF77 signal is a low frequency radio signal which transferred the time and date. It will be sent in Frankfurt am Main, derived of the local atomic clock and sent with the carrier frequency of 77.5 kHz. Therefore, these watches are also known as radio clock.

The input for the DCF77 antenna can now automatically detect whether a pullup resistor is required and whether the input has to be inverted.

Even a simple alarm function is implemented.

This IC is suitable for big displays and has a SPI interface for Shift registers or LED driver.

This IC also has an adjustable brightness control for the display, thereby the display is easy to read during the day and at night it does not light out the entire room.

With this IC the **temperature** will be displayed alternately with the time and or date.

This IC has a bootloader, which allows you to update the IC firmware. This means that you will always remain at the current state of the Firmware for the IC, without further costs.

## Alarm Function

The simple alarm clock function allows you to set one alarm time so that you are wake up every morning.

In the menu the alarm and the snooze time can be set. With the adjusted snooze time the alarm waits if the alarm is not stopped at a wake-up call, but the snooze function is activated. The maximum alarm time can be adjusted between 2 and 60 minutes.

The alarm can be activated and deactivated also outside the menu. If the wake-up call is active with S1 or S2 the alarm clock can be stopped and with S3 or S4 the snooze function will be activated.



### Dissembled time

Because the DCF clock daily synchronized with the current DCF time, it is possible that in worst cases, an incorrect time is read and therefore the wake-up call comes at a wrong time! Therefore, the time synchronization should eventually be placed in a time of day where it is possible to check the correct time before sleeping, if the alarm function is used.

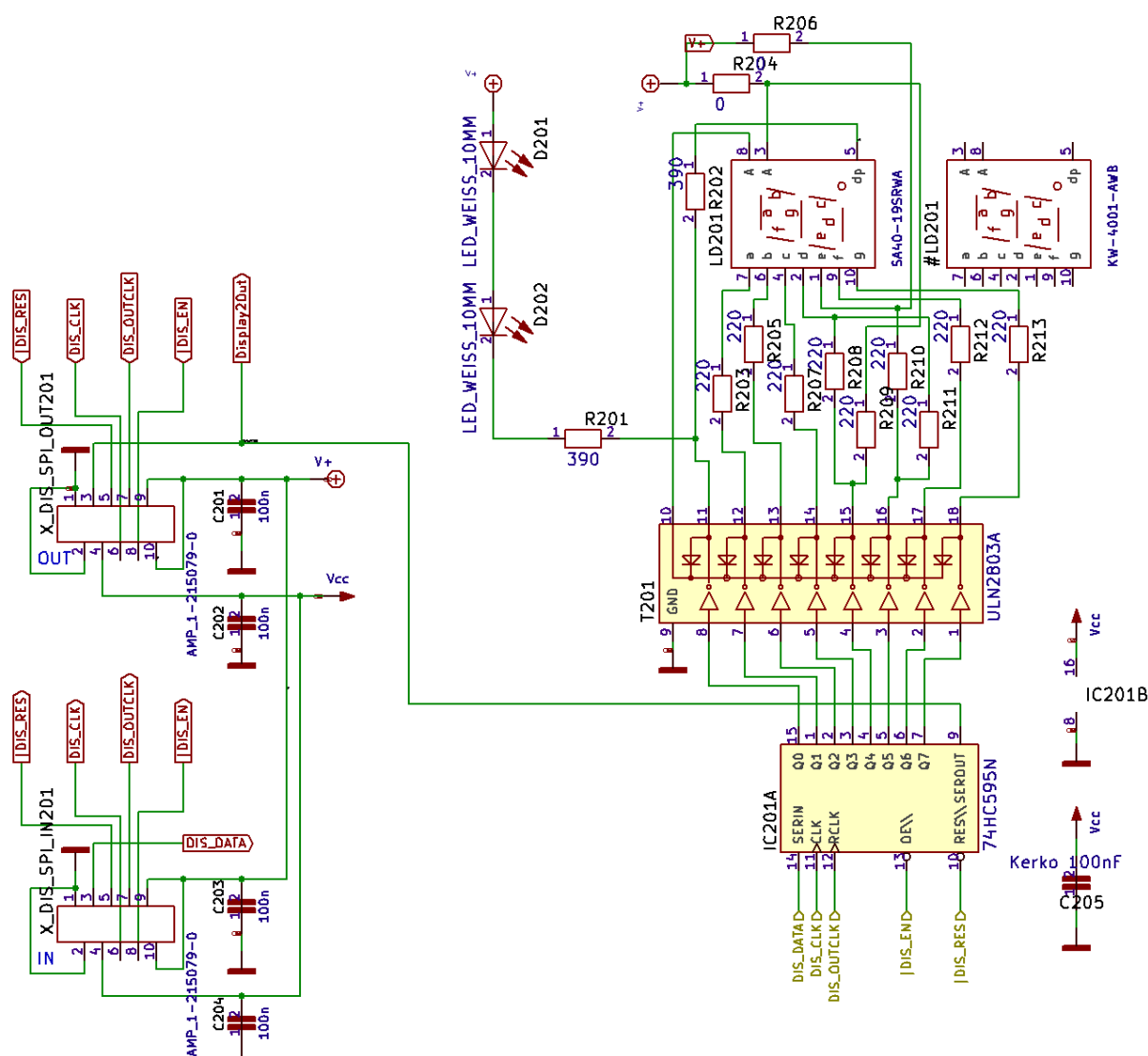
## Technical data

- Operating voltage: 12 (red, green, yellow) - 19 (white, blue) volts DC
- Current: 1A
- Power: approximately 12 (red, green, yellow) - 19 (white, blue) W
- Volume level of the buzzer: approx. 85 to 90 DB
- Accuracy of the timer: better uncalibrated 99.999.9 %; calibrated better 99.99999.999 %
- Temperature accuracy:
  - Worst inaccuracy:  $\pm 2.5^{\circ}\text{C}$
  - Typical:  $\pm 1^{\circ}\text{C}$
  - Calibrated:  $< \pm 1^{\circ}\text{C}$

The values apply when using the LM35, when calibrated, the value can also be reached for other sensors.

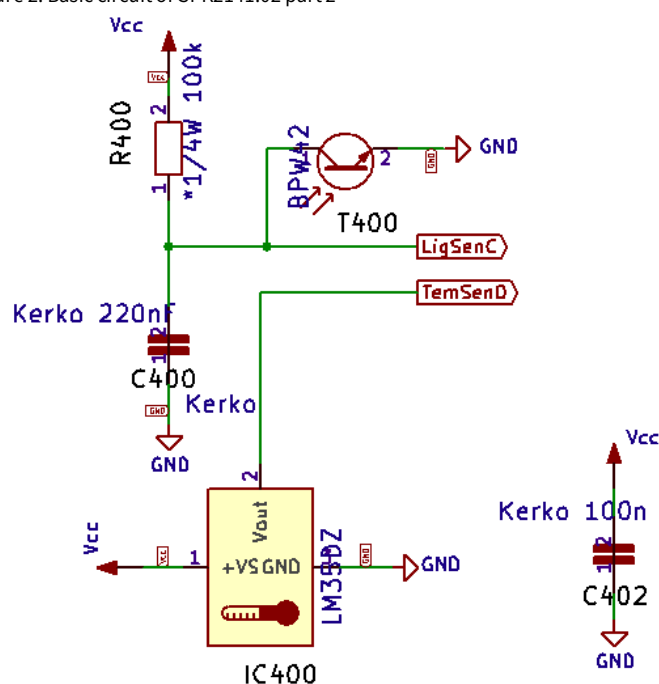


Figure 1: Basic circuit of SPK2141.02 part 1



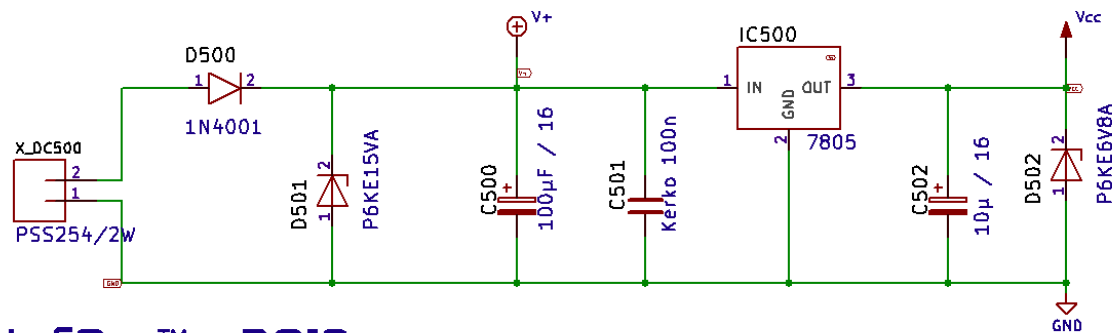
©StefPro™ - 2019

Figure 2: Basic circuit of SPK2141.02 part 2



©StefPro™ - 2019

Figure 3: Basic circuit of SPK2141.02 part 3



©StefPro™ - 2019

Figure 4: Basic circuit of SPK2141.02 part 4

## Bill of material

Pos	Quantity Total		Name	Alternative names for alternative assembly	Value		Package
Scope of delivery							
1	11	11	C100,C101,C102,C103,C109,C110, C111,C112,C401,C402,C501		Kerko 100nF	C2	
2	2	2	C104,C105		NP0 27pF	C1	
3	1	1	C106		Kerko 10n	C2	
4	1	1	C108		Kerko 1n	C2	
5	2 or 4	20	C201,C202,C203,C204		100n	0603	
Note: The capacitors are only fitted if the connectors X_DIS_SPI_IN201 or X_DIS_SPI_OUT201 are also fitted, so there are actually only 20 and not 24 capacitors.							
6	1	6	C205		Kerko 100nF	C2	
7	1	1	C400		Kerko 220nF	C2	
8	1	1	C500		100µF / 16	CP_Radial_D6.3mm_P2.50mm	
9	1	1	C502		10µ / 16	CP_Radial_D5.0mm_P2.50mm	
10	1	1	D100		P6SMD 6,8A	SMB	
11	1	1	D101		1N4148	DO35	
12	1	1	D500		1N4001	D_RM12,7_DM3	
13	1	1	D501		P6KE15VA	SMB	
14	3	3	D502,D102,D103		P6KE6V8A	SMB	
15	1	1	IC1		SPM2141.1 or SPM2241.1	DIP-28_W7.62mm_Socket	
16	1	6	IC201		74HC595N	DIP-16_W7.62mm_LongPads	
17	1	1	IC400		LM35DZ	TO92(1)	
18	1	1	IC500		7805	TO220_LIEGEND	
19	1	1	L100		10µH	R_Axial_DIN0207_L6.3mm_D2.5mm_P10.16mm_Horizontal	
20	1	1	Q100		HC49U 8MHz	HC49_U_118	
21	1	1	R100		100	0207	
22	1	6	R202 (R201 on tens of minutes)		390	0207	
23	7	42	R203,R205,R207,R208, R210,R212,R213	R203,R205,R207,R209, R211,R212,R213	220	0207	
24	1	1	R204	R206	0	0207	
25	1	1	R400		*1/4W 100k	0207	
26	1	1	S100		AL-16SP12_39	D18R7,62	
27	4	4	S101,S102,S103,S104		PHAP3301D	KURZHUBTASTER_6X6	
28	1	6	T201		ULN2803A	DIP-18_W7.62mm_LongPads	
29	1	1	T400		BPW42	FOTO_5MM	
30	1	5	X_DIS_SPI_IN201		AMP_1-215079-0	AMP_1-215079-0	
31	1	5	X_DIS_SPI_OUT201		AMP_1-215079-0	AMP_1-215079-0	
To order separately							
32	2	4	D201,D202		LED_WEISS_10MM	LED_10MM_WEISS	
33	1	6	LD201		SA40-19SRWA	S_40-19	
34	1		X_DC500				
35	1		X_DCF1				



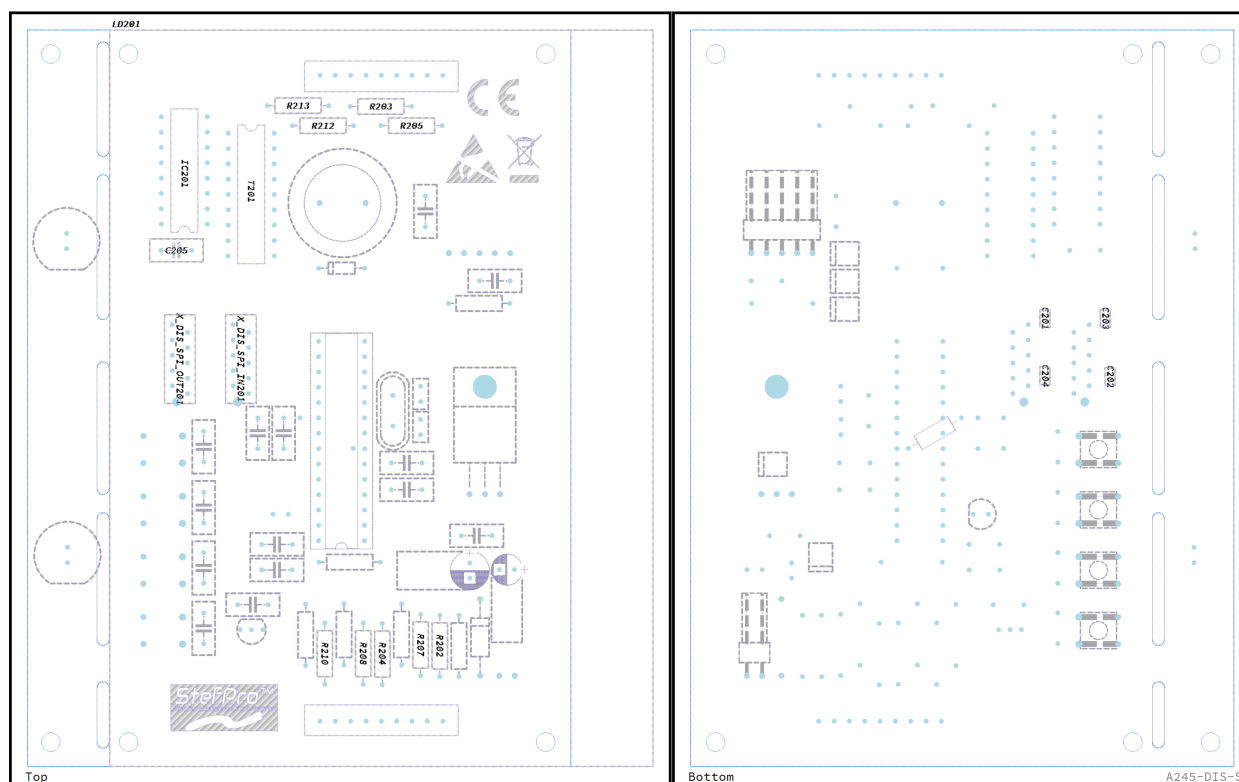


Figure 7: Basic assembly of SPK2141.02 2

Assembly plan with reference. Ones digit of Minute and hours, 3 times to assembly.

**Note 1: On the ten-digit of hour display module does not need to assembly the left MicroMatch X\_DIS\_SPI\_OUT201.**

**Please note the information on the parts list.**

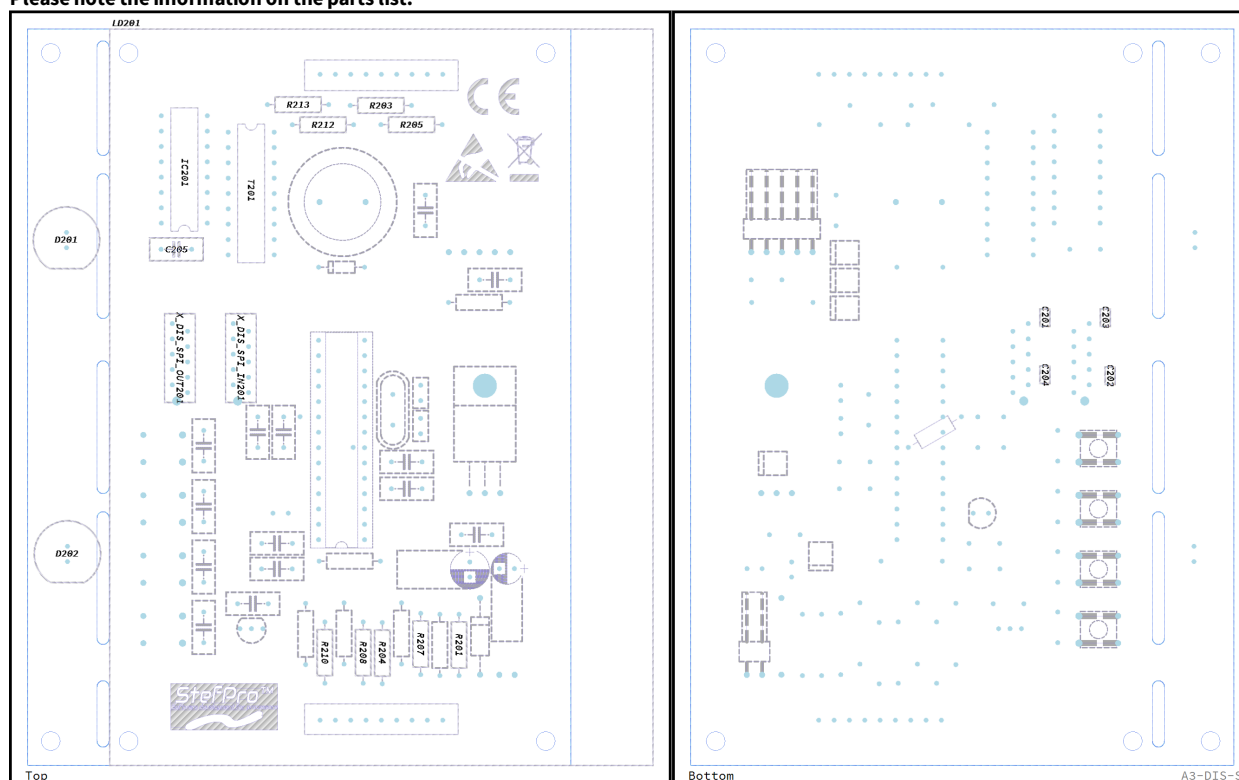
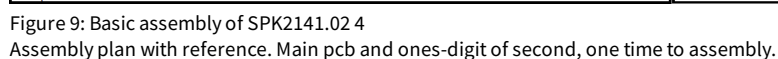


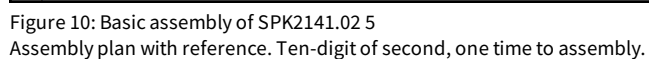
Figure 8: Basic assembly of SPK2141.02 3

Assembly plan with reference. Tens of minutes and tap for colon. 1 times to assembly.

**Assembly with KW1-4001AWB display by Lucky Light**



LD201





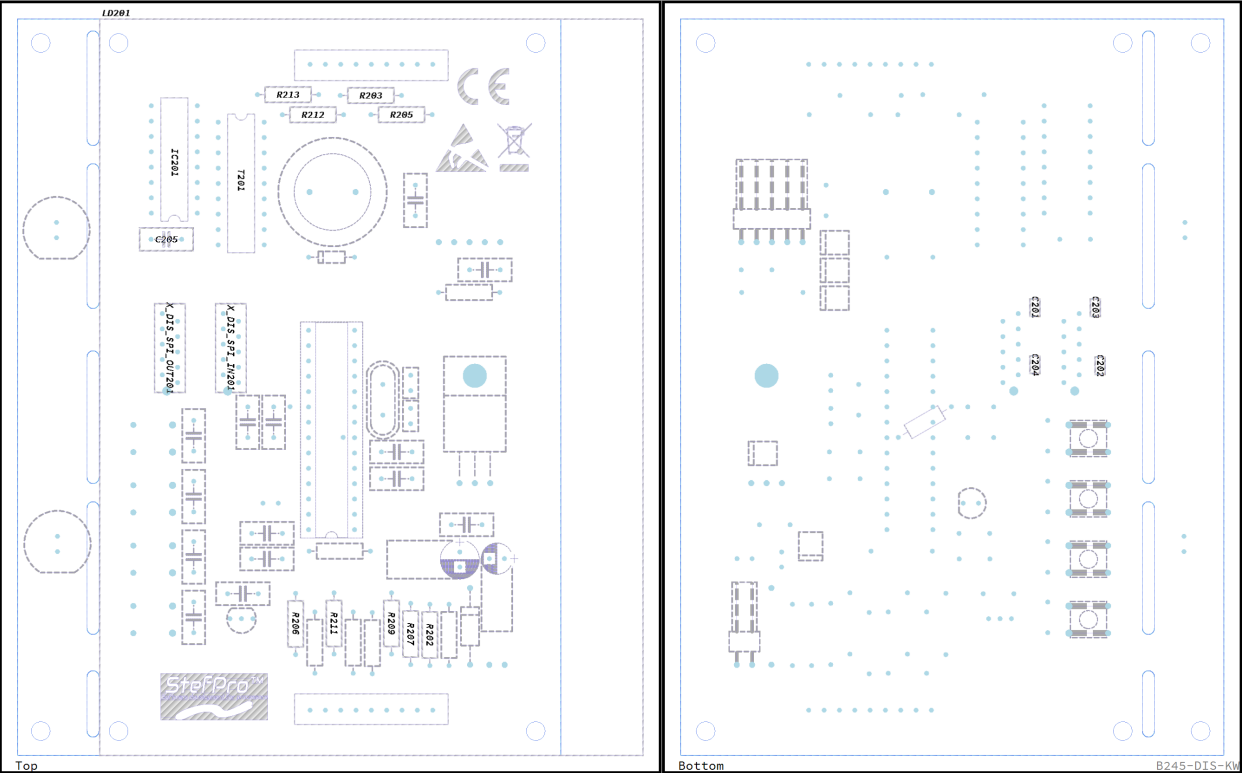


Figure 11: Basic assembly of SPK2141.02 6  
Assembly plan with reference. Ones digit of Minute and hours, 3 times to assembly.  
**Note 1: On the ten-digit of hour display module does not need to assembly the left MicroMatch X\_DIS\_SPI\_OUT201.**  
**Please note the information on the parts list.**

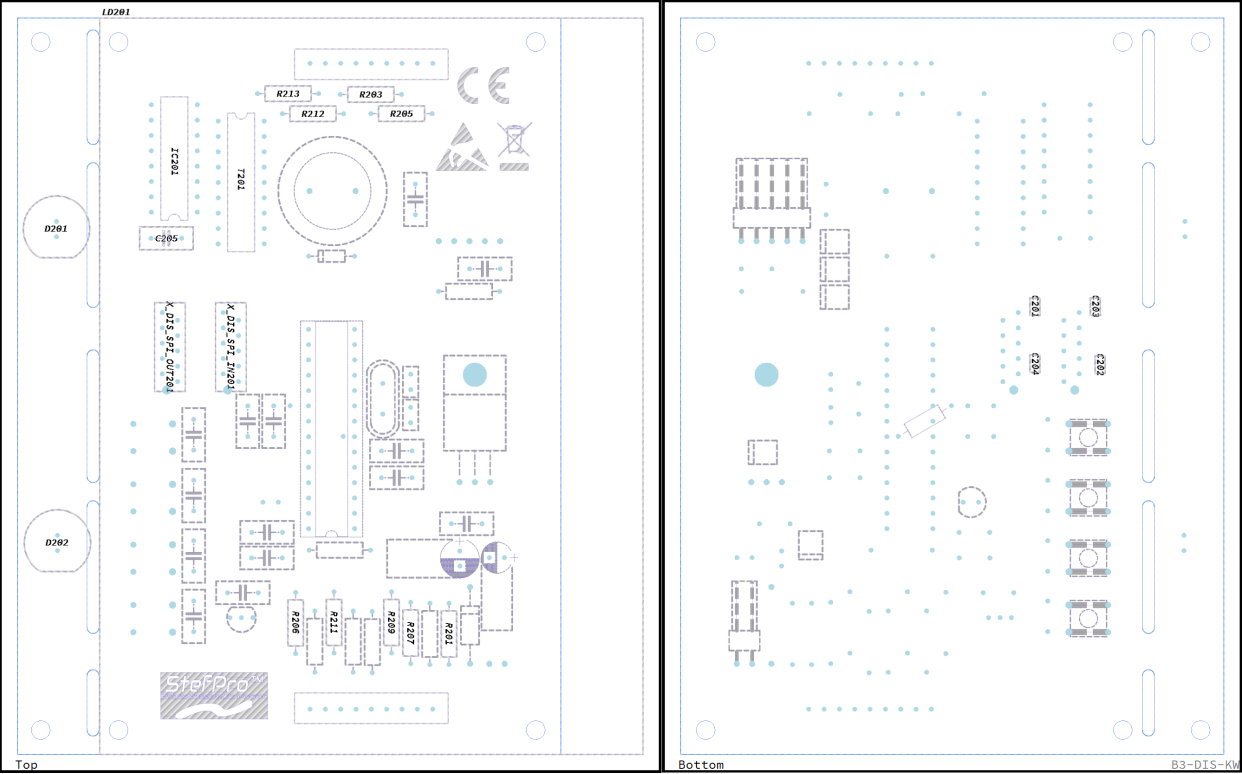
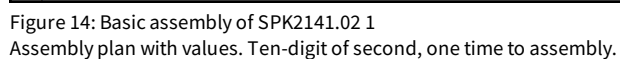
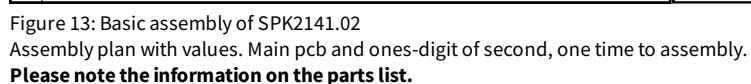
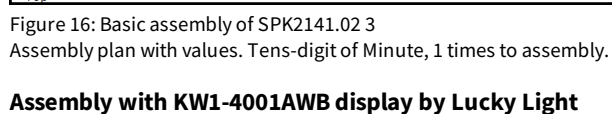
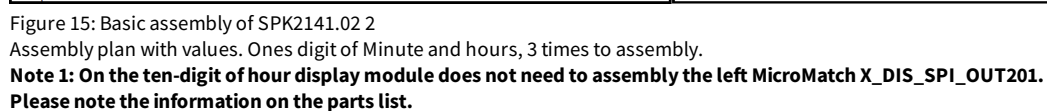


Figure 12: Basic assembly of SPK2141.02 7  
Assembly plan with reference. Tens of minutes and tap for colon. 1 times to assembly.

Assembly plan with values

Assembly with SA40-19 display by Kingbright





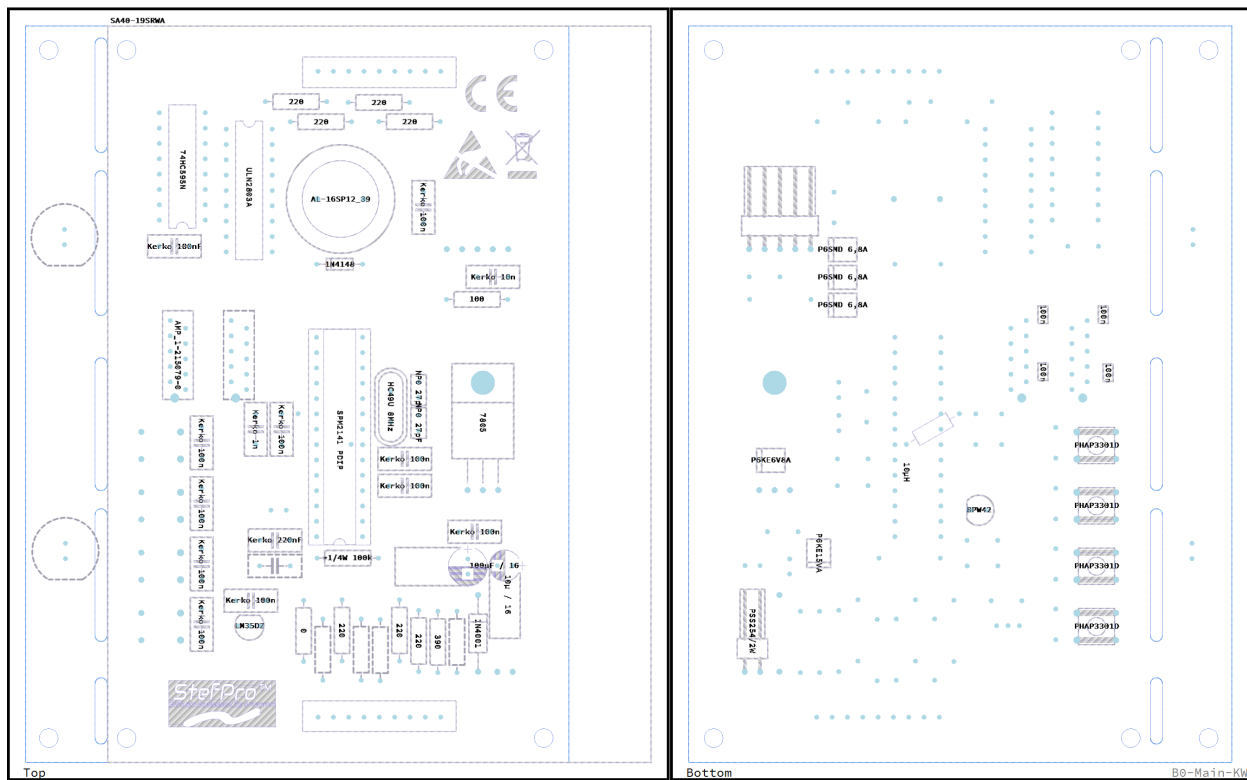


Figure 17: Basic assembly of SPK2141.02 4  
Assembly plan with values. Main pcb and ones-digit of second, one time to assembly.  
**Please note the information on the parts list.**

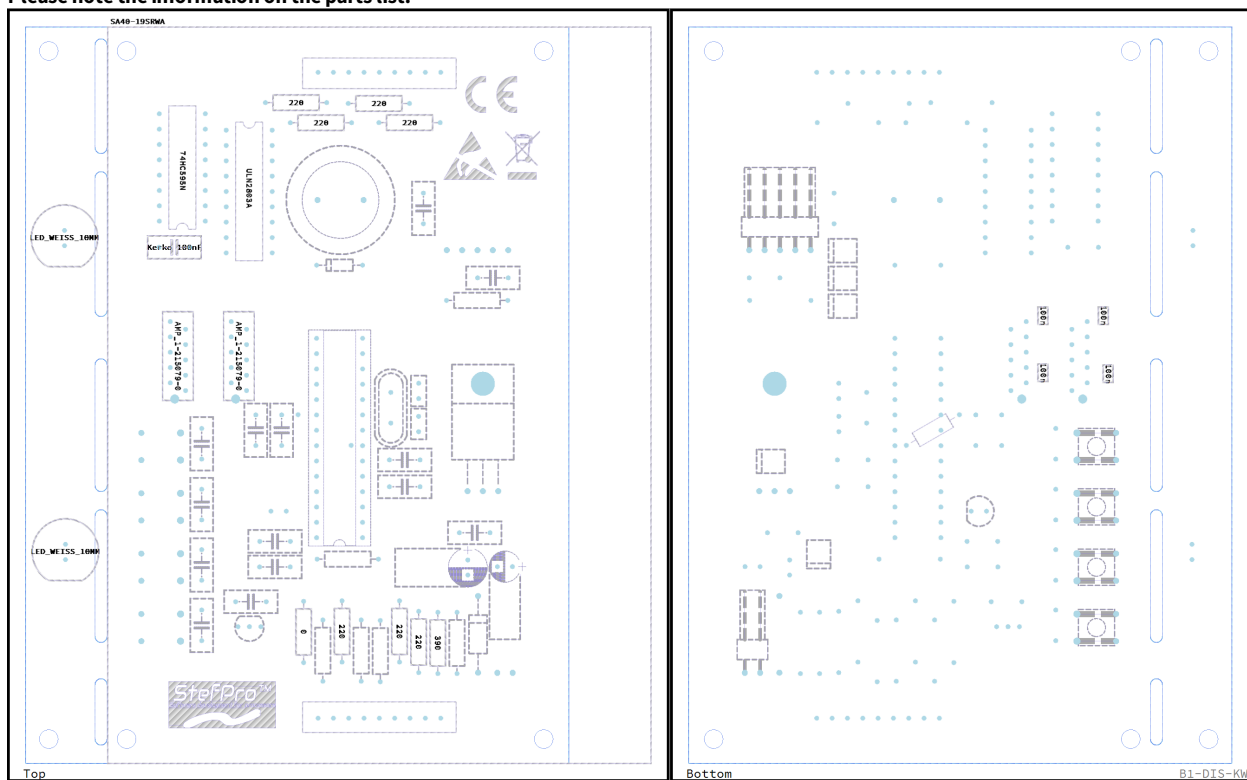


Figure 18: Basic assembly of SPK2141.02 5  
Assembly plan with values. Ten-digit of second, one time to assembly.

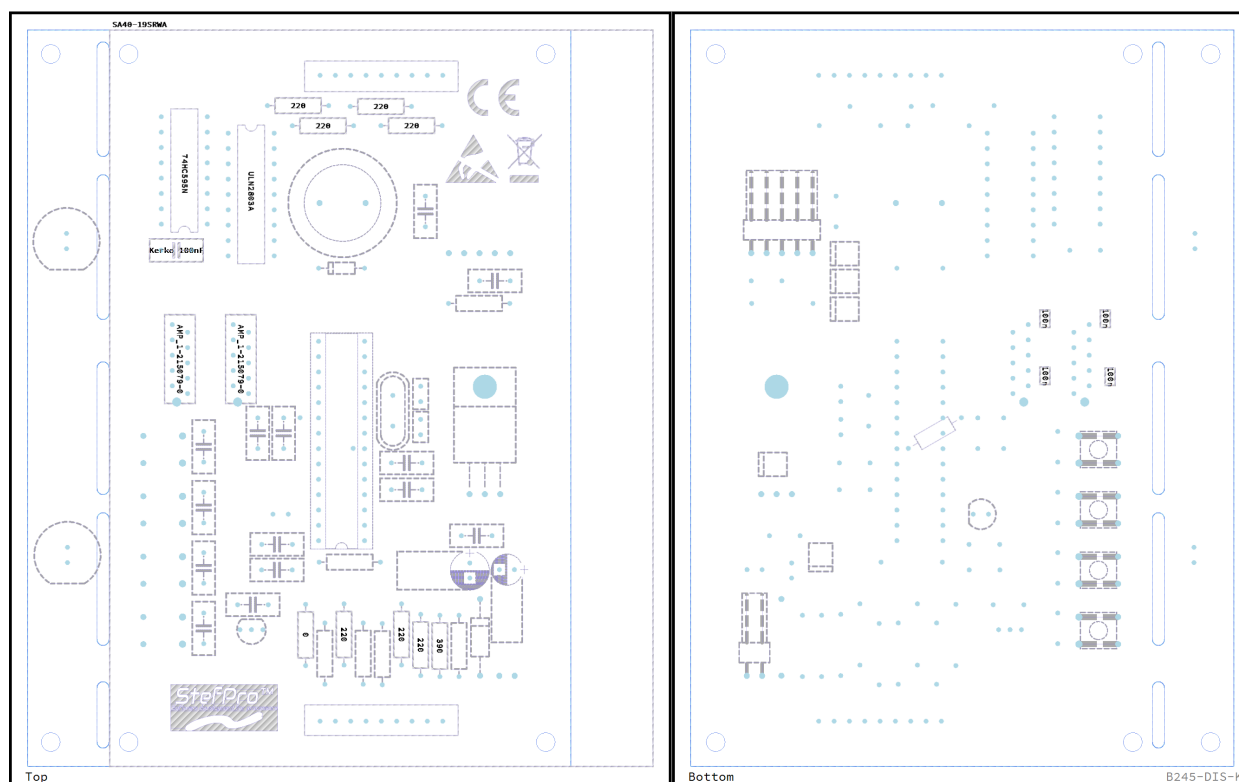


Figure 19: Basic assembly of SPK2141.02 6

Assembly plan with values. Ones digit of Minute and hours, 3 times to assembly.

**Note 1: On the ten-digit of hour display module does not need to assembly the left MicroMatch X\_DIS\_SPI\_OUT201.**

**Please note the information on the parts list.**

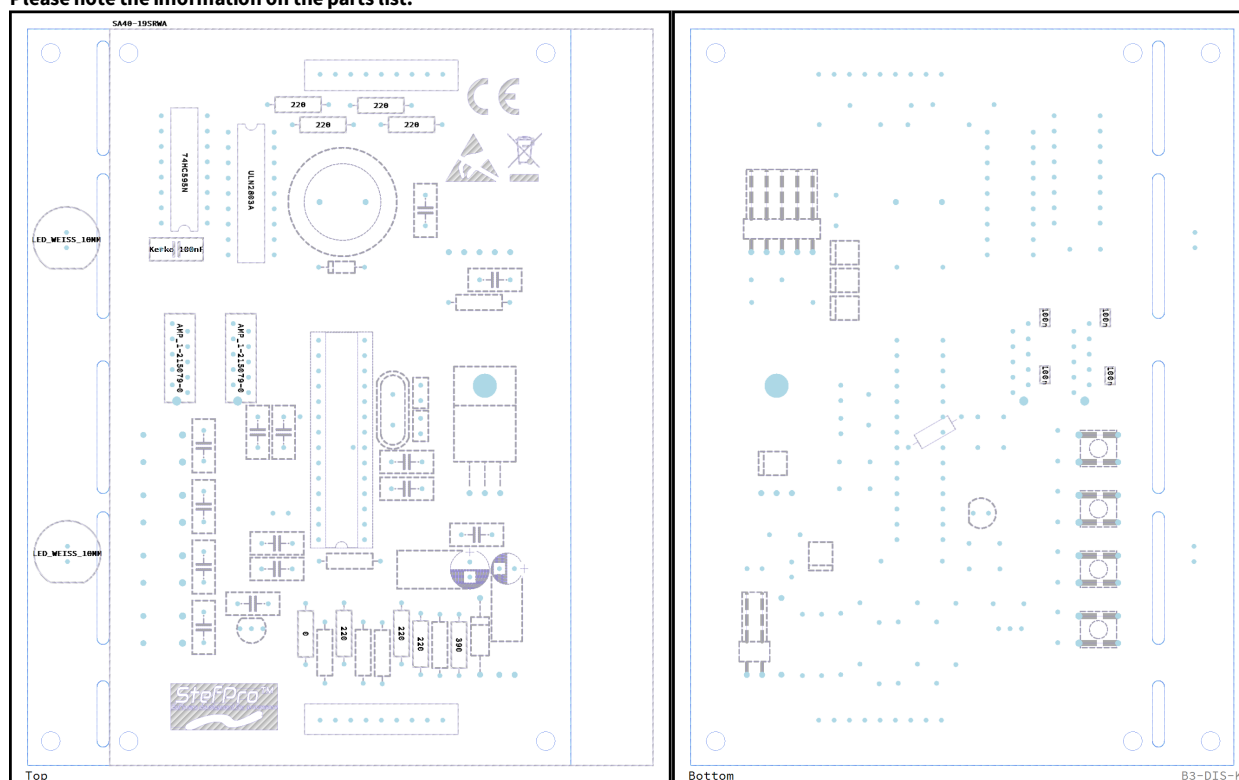


Figure 20: Basic assembly of SPK2141.02 7

Assembly plan with values. Tens-digit of Minute, 1 times to assembly.

## Assembly in 3D representation

Meaningful sequence for meaningful placement.

**Note: This shows the assembly of SA40 displays by Kingbrigt, there are notes for the assembly of KW1-4001AWB.**



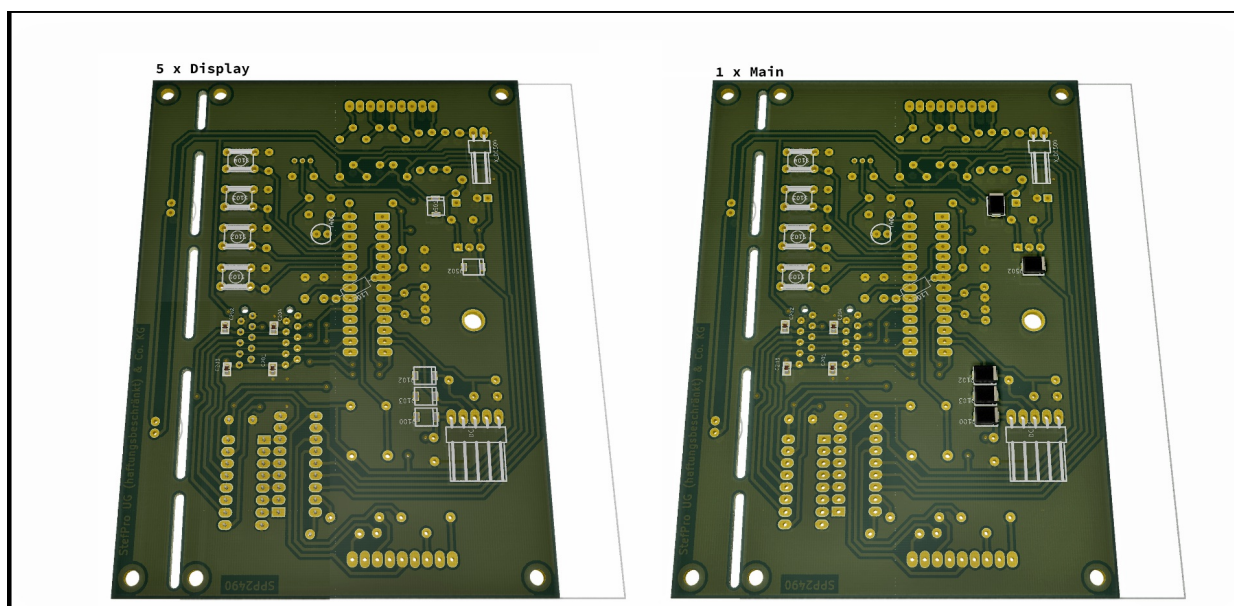


Figure 21: Basic SMD assembly of SPK2141.02 step 1

First, the SMD components should be soldered on the bottom side, these are for electrostatic protection (ESD) and to improve the electromagnetic compatibility (EMC).

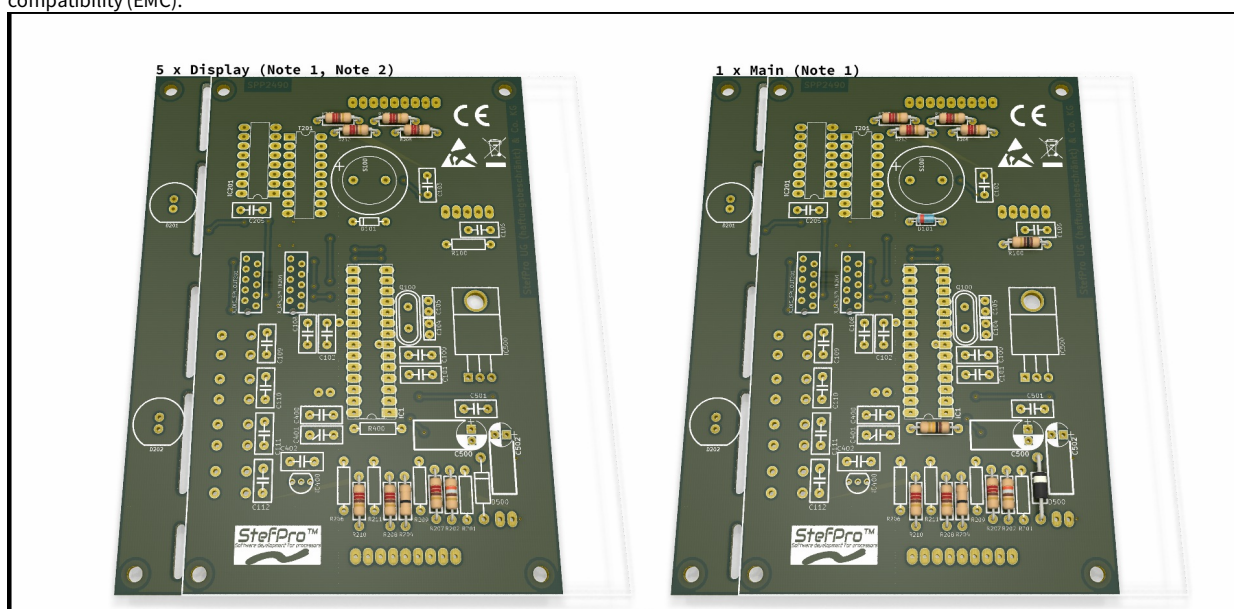


Figure 22: Basic assembly of SPK2141.02 step 1

Now the leaded components on the top side (display side) should solder in flat component, such as resistors, diodes and coils.

**Note 1:** This assembly is drawn to use with Kingbright SA40 displays. If you use KW1-4001AWB from Lucky Light, then instead of R204, R208 and R210 → R206, R209 and R211.

**Note 2:** For a display (later Display for tens of minute) R201 must be populated instead of R202 for the colon.

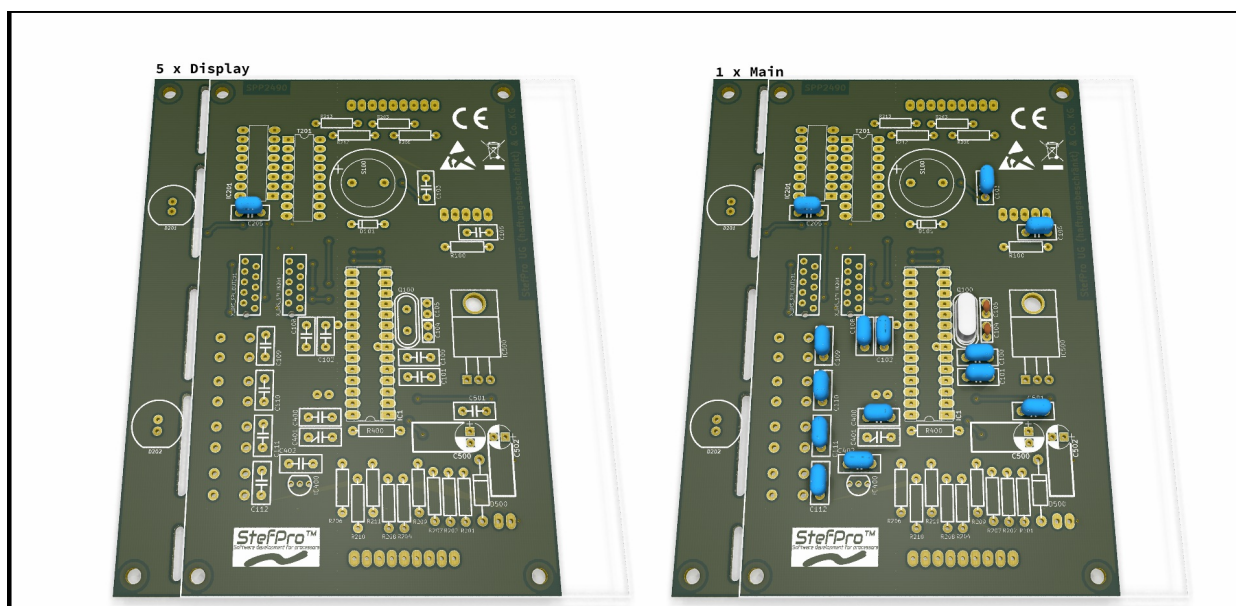


Figure 23: Basic assembly of SPK2141.02 step 2

Now you can solder ceramic capacitors and the quartz.

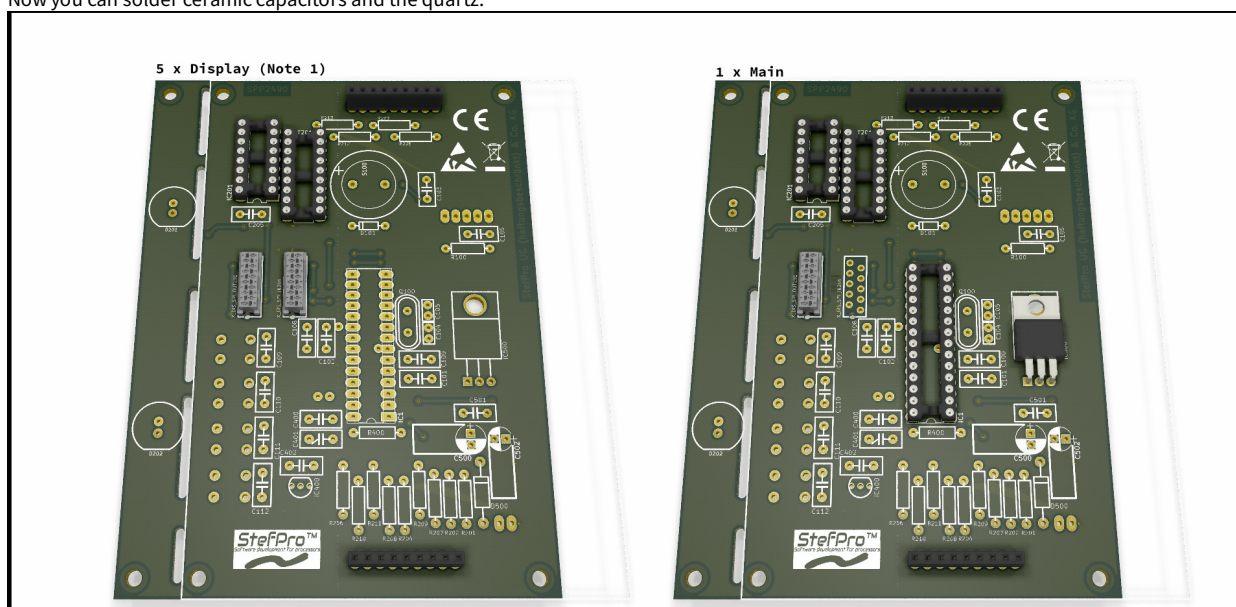


Figure 24: Basic assembly of SPK2141.02 step 3

Next comes the IC sockets for the SPM2x41P, 74HC595, and ULN2803A. The IC's can also be soldered directly, but should not. Furthermore, assembly the MicroMatch, female connectors and the voltage regulator in the TO220 housing.

**Note 1:** In the display unit for the tens place of the hour, the left MicroMatch (gray plug on the picture) does not have to be equipped.



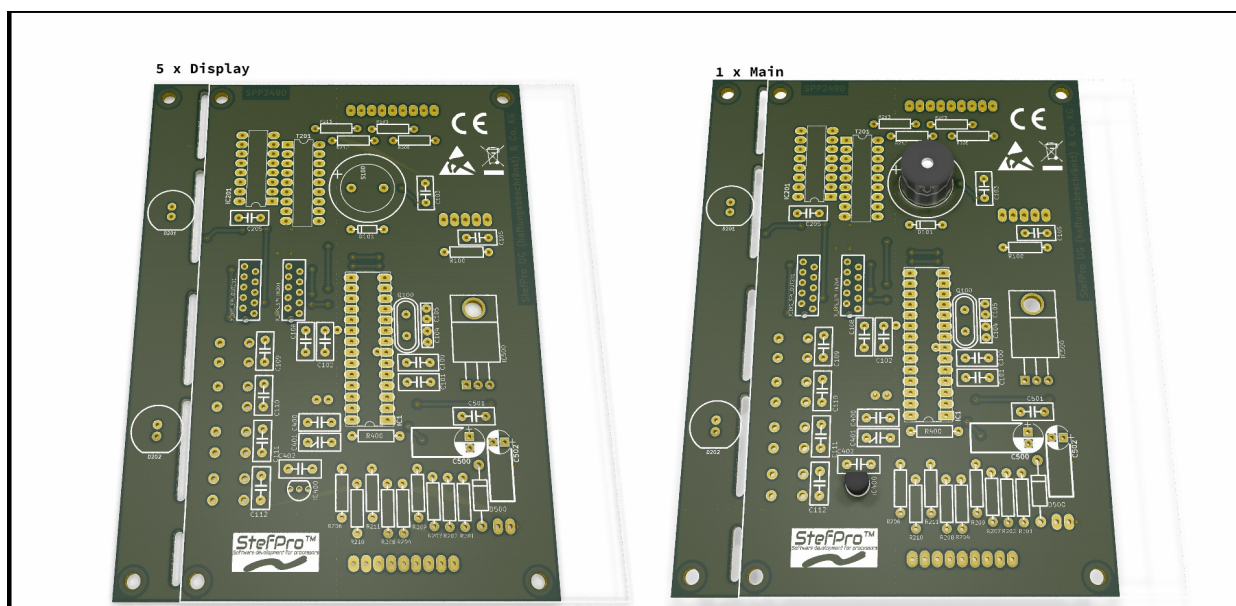


Figure 25: Basic assembly of SPK2141.02 step 4

Now it is the temperature sensor LM35 turn. Please make sure to keep enough distance. Optionally, the temperature sensor can be connected via stranded wire to achieve better heat coupling to the housing, in this case use shrink tubing for insulation. The buzzer can now also be soldered. These components are only necessary on the main board.

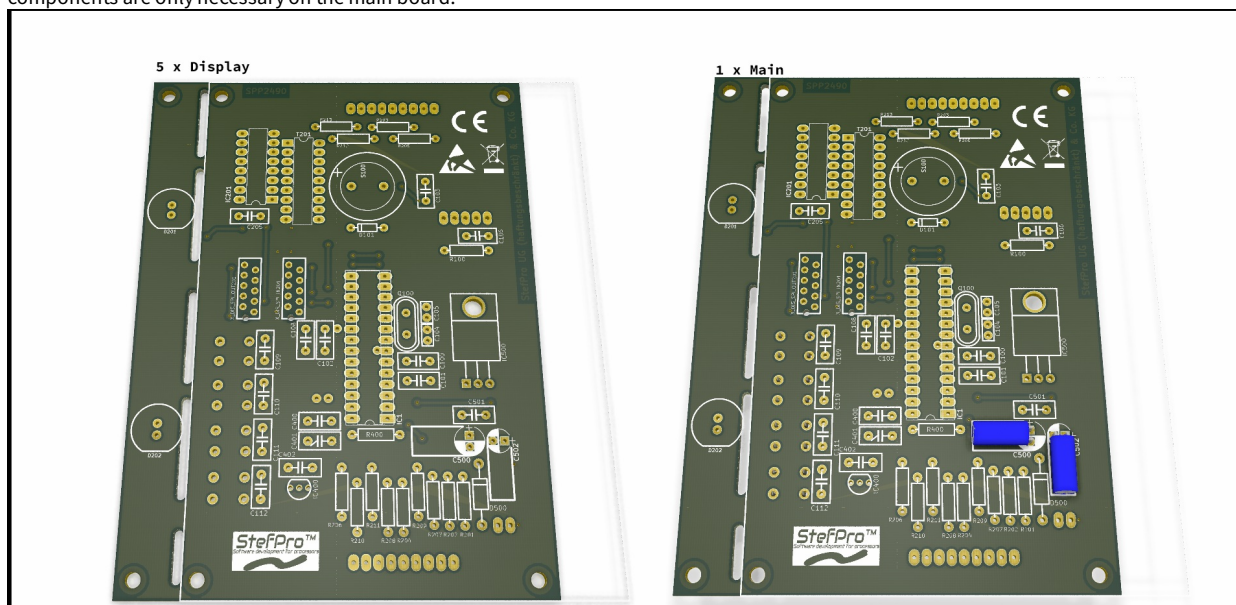


Figure 26: Basic assembly of SPK2141.02 step 5

The Elko's are a bit higher and are therefore now their turn. These components are only necessary on the main board.



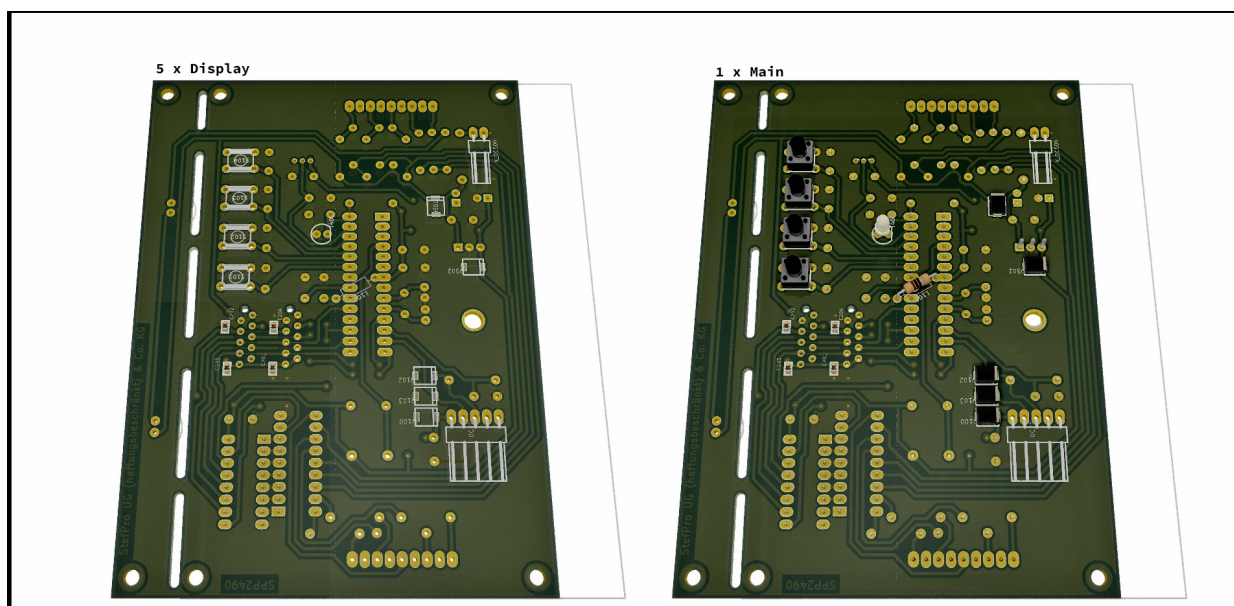


Figure 27: Basic assembly of SPK2141.02 step 6

The Elko's are a bit higher and are therefore now their turn. For the coil, please note that you leave some distance to the IC socket pin. Also with the phototransistor BPW42 it is to be ensured that this one will be illuminate by light later, maybe you should connect this over cable. These components are only necessary on the main board. Finally, the LEDs and 7 segment displays (these are to be ordered separately), these are to be soldered directly onto the PCB.

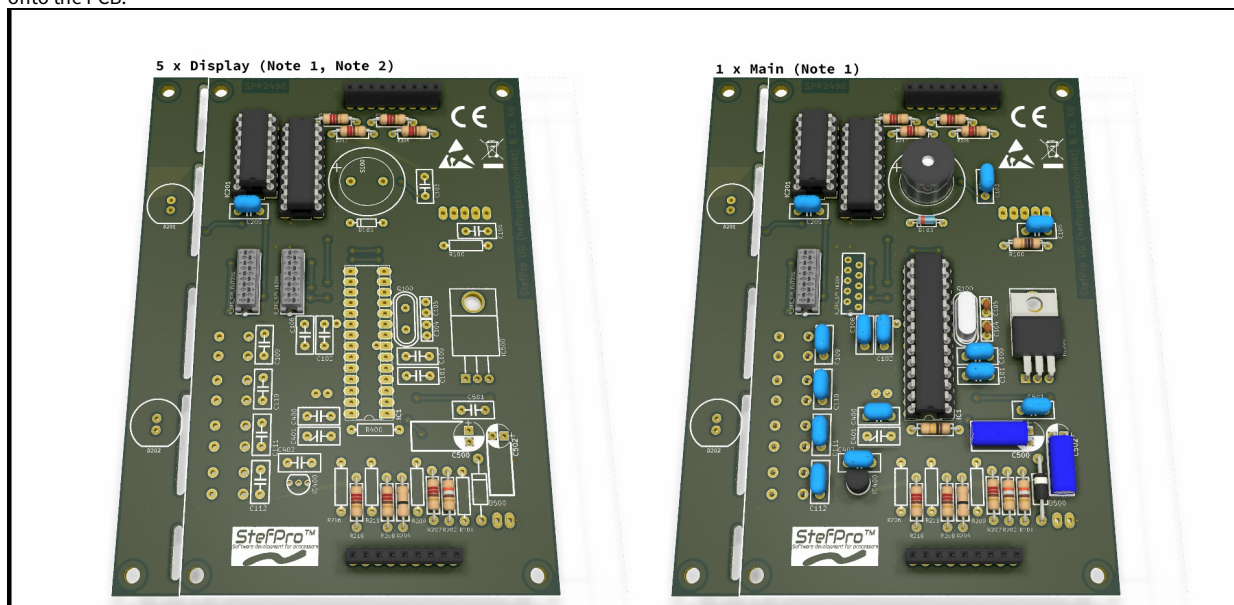


Figure 28: Complete assembly of SPK2141.02

The finished modul without displays and it still lacks the wires to the supply voltage and the DCF receiver.

**Note 1:** This assembly is drawn to use with Kingbright SA40 displays. If you use KW1-4001AWB from Lucky Light, then instead of R204, R208 and R210 → R206, R209 and R211.

**Note 2:** For a display (later Display for tens of minute) R201 must be populated instead of R202 for the colon.

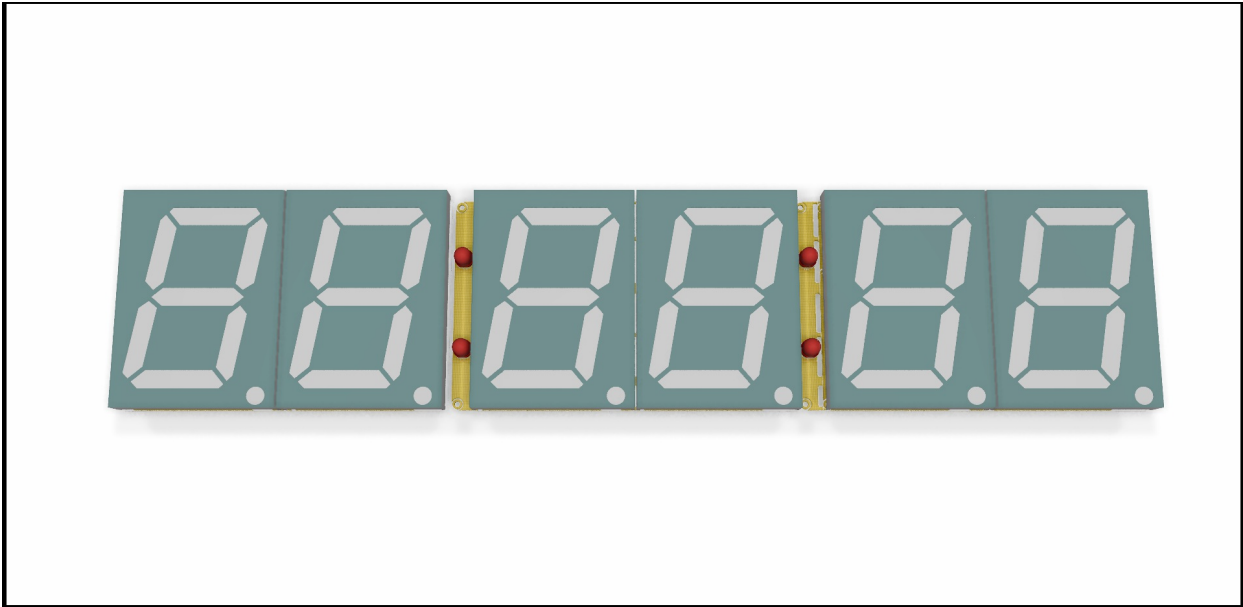


Figure 29: Complete assembly of SPK2141.02 with display  
The finally assembled pcb, only the wires for the supply voltage and the DCF receiver are missing.

Connectors

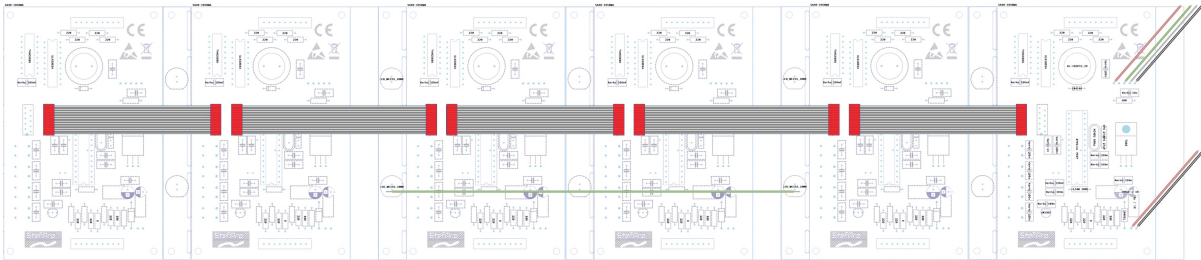


Figure 30:Connector description for module SPP2490.0

Insert the appropriate plugs with little effort.

**DANGER**

Make sure that you have connected all signals correctly. There is no overload and polarity protection!

X-DC : DC Power input : Print plug 2 pole

Pin	Name	Direction	Function	Maximum
1	GND	Power		
2	V+	Power	Power supply input of the module	12 (red, green, yellow) - 19 (white, blue) volts DC, 1A

X-DCF : DCF input, DCF PowerSave output: Print connector 5 pin

Pin	Name	Direction	Function	Maximum
1	GND	Power		
2	N.C.		Do not connect	VCC
3	DCF in	Digital input	<u>DCF</u> signal input	VCC
4	DCF ps	Digital Output	<u>DCF</u> PowerSave output	VCC
5	VCC	Power		5 volts DC, 100mA

Never solder the DCF module directly onto the circuit board, even if the ELV module suggests it. Please connect this with some stranded wire to allow a certain distance to the display.

Please also note the information in the chapter "Properties of the components - DCF module properties".

X-DIS-SPI-OUT : DISplay output1, SPI : MicroMatch 10 Polig

Pin	Name	Direction	Function	Maximum
1	GND	Power		
2	GND	Power		
3	DIS_DATA	Digital output, SPI	Display data output	VCC

4	VCC	Power	5 Volt powersupply	5 volts DC, 100mA
5	DIS_RES	Digital output, SPI	Display reset output	VCC
6	DIS_CLK	Digital output, SPI	Display clock output	VCC
7	DIS_OUTCLK	Digital output, SPI	Display output clock output	VCC
8	DIS_EN	Digital output, SPI	Display enable output	VCC
9	V+	Power	Display powersupply	12 (red, green, yellow) - 19 (white, blue) volts DC, 1A
10	V+	Power	Display powersupply	12 (red, green, yellow) - 19 (white, blue) volts DC, 1A

X-DIS-SPI-IN : DISplay input1, SPI : MicroMatch 10 Polig

Pin	Name	Direction	Function	Maximum
1	GND	Power		
2	GND	Power		
3	DIS_DATA	Digital input, SPI	Display data input	VCC
4	VCC	Power	5 Volt powersupply	5 volts DC, 100mA
5	DIS_RES	Digital input, SPI	Display reset input	VCC
6	DIS_CLK	Digital input, SPI	Display clock input	VCC
7	DIS_OUTCLK	Digital input, SPI	Display output clock input	VCC
8	DIS_EN	Digital input, SPI	Display enable input	VCC
9	V+	Power	Display powersupply	12 (red, green, yellow) - 19 (white, blue) volts DC, 1A
10	V+	Power	Display powersupply	12 (red, green, yellow) - 19 (white, blue) volts DC, 1A

# Properties of the components

## 7 segment displays

The seven-segment display LD1 and LD2 must have a common anode. Via R1 to R8 the brightness of the LEDs can be set.

### Possible displays

SA40-19SRWA in red by Kingbright and KW1-4001AWB in white by Lucky Light. Others on request.

### Effect of an acrylic glass

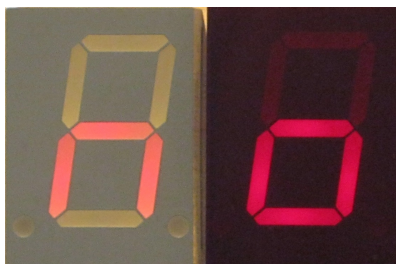


Figure 31: SA08-11SRWA left without and right with contrast pane with front light.



Figure 32: SA08-11SRWA left without and right with contrast pane without front light.

Below with and above without front light.

Because the display control is static, all 7 segment displays can be used. It can only be that, with reduced brightness setting, not all 7 segment displays lead to the desired result.

All segments with 4 LEDs were limited with a 220 ohm resistor. All segments with 2 LED (decimal point on SA23 and SA40) were limited with 390 ohm resistor.

This circuit is not optimised for minimum components and power. The displays are therefore easy to read when illuminated directly by lamps. The brightness of the display is also important for readability. A milky display such as the SA40 is not as easy to read as a display consisting of individual clear LEDs. Even in the shade there is still enough light, namely around 10,000 lux. At maximum current, however, the SA40-SRWA only measured approx. 3,000 lux with a Peaktech 3695.

It is recommended to place a contrast glass in the corresponding display colour in front of the displays, see figure 32 and 31.

Correct colour of the glass.

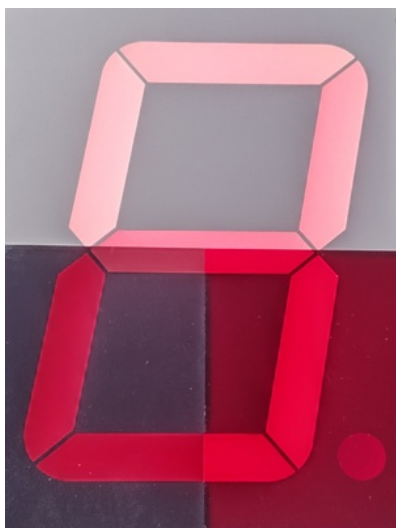


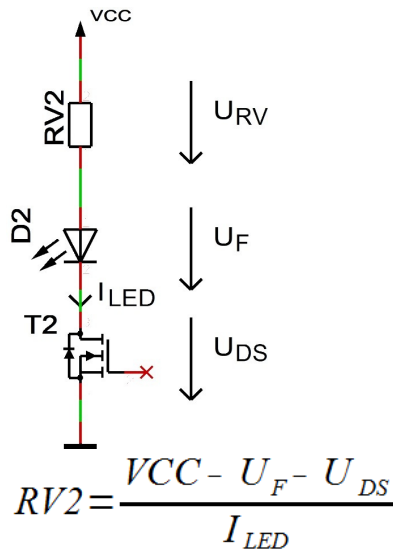
Figure 33: SA40-19SRWA top without, bottom left grey and right with red contrast lens with front light

#### SPI contrast without front light 2

Figure 34: SA40-19SRWA upper red and lower gray contrast pane with front light.

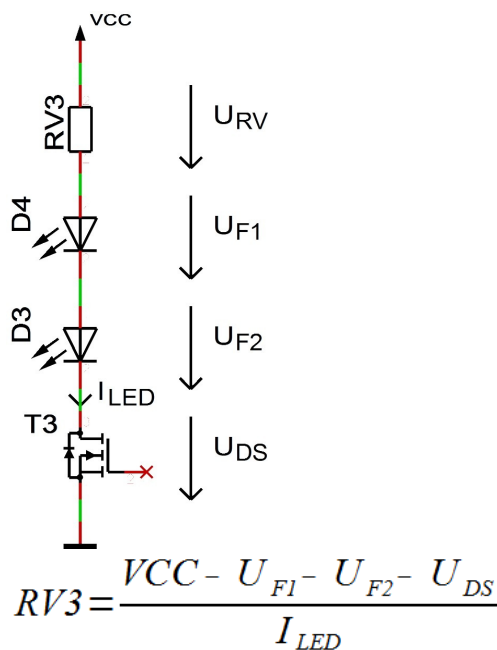
The colour of the disc also makes a difference, see 33 and 34 with 20,000 lux front light. Note: The menu is always displayed with 100% brightness.

#### Calculate the series resistor for one LED



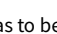
- $U_{DS} \approx 0$
- $I_{LED} < 35 \text{ mA}$


#### Calculate the series resistor for two LED



- $U_{DS} \approx 0$
- $I_{LED} < 35 \text{ mA}$

#### DCF module properties

- The module has to be able to work with an operating voltage of 5V (some modules have an operating voltage range of 1.2 to 15 volts, these are also usable)
- The output has to be able to drive a CMOS input with a input impedance of 10kΩ
- For DCF modules with open collector (open collector) or open drain output the input detected automatically by default whether a pull-up resistor is required. In menu a pull-up resistor can be connected or disconnected permanently.
- Polarity of the output:
  - The output has to be non inverting, the high  state has to be 100ms or 200ms

- The output has to be inverting, the low  state has to be 100ms or 200ms
- The receiving LED should at good reception signal flash every second for 100 ms and 200 ms. Does the receiving LED goes off every second for 100 ms and 200 ms, then the polarity is wrong. Unfortunately, you then connected a wrong module, this can't be analyzed with the microcontroller.
- Whether the output is non inverting or inverting, is detected automatically by default or can be set in the menu.
- The receiving LED should at good reception signal flash every second for 100 ms and 200 ms. Does the receiving LED goes off every second for 100 ms and 200 ms, then the polarity is wrong. To correct this, you has to be invert the setting for the inverting DCF input pin in the menu. (Instead of on → off → on or off)
- The DCF module can have a power on / off pin. Then the DCF module is automatically switched off when the DCF signals from the microcontroller are not analyzed. In the menu can be set if the DCF module is with low or high on.

Tested modules

Module	GND	VCC	DCF input	PowerSave output	Comment
Conrad DCF Modul	1 (GND)	2 (Betriebs...)	3 (DCF Ausgang)	-	
ELV DCF Modul	3 (Masse)	1 (+ UB)	2 (Signal-Ausgang)	-	
Pollin DCF Modul	GND	VCC	DATA	PON	Caution An additional circuit is required for an operating voltage of more than 3.3V!

Our standard color coding for DCF signals

- GND: black
- VCC: rot
- DCF input: green
- PowerSave output: white ( is not supported by each DCF receive module )

You can usually also supply the DCF receiver via the PowerSave output. But in this case you must ensure that this output is not inverted in the menu and that the pin must not be permanently loaded with more than 20 mA.

Connect the DCF module with approx. 10 cm wire, it is best to select the colors as in the table above, so that this can be mounted at some distance from the display.

WARNING

Please check the pin assignments! It is not in our hands whether the manufacturers of the DCF receive modules change the pin assignments at a later date.

Connection of the DCF module using a fake module

Here you will find some examples for the wiring of the DCF modules, as already mentioned, some strands are intended for wiring.

Without Power On / Off or Power Save input

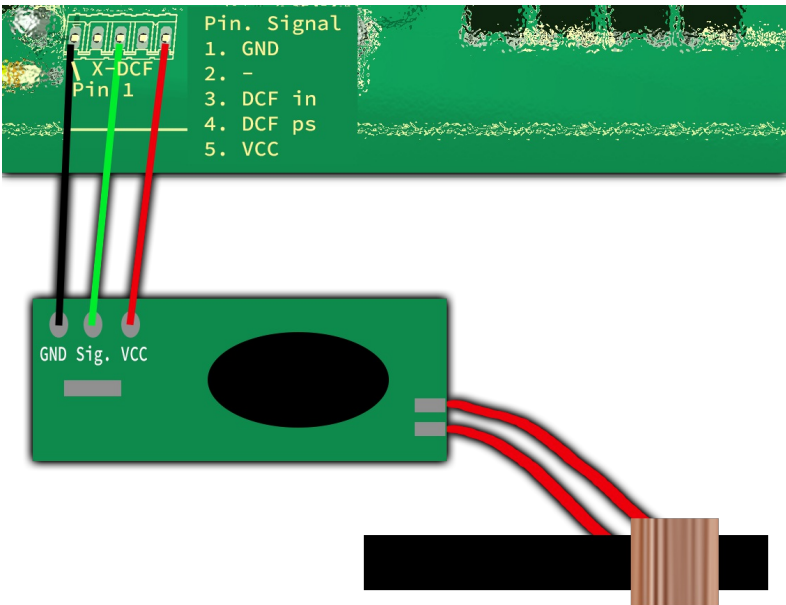


Figure 35: DCF connection to VCC

In the figure above you can see the classic wiring of the 5-pin pin strip and the DCF receiver module. Here the receiving module is permanently supplied with 5 volts or VCC and therefore also permanently supplies a signal.



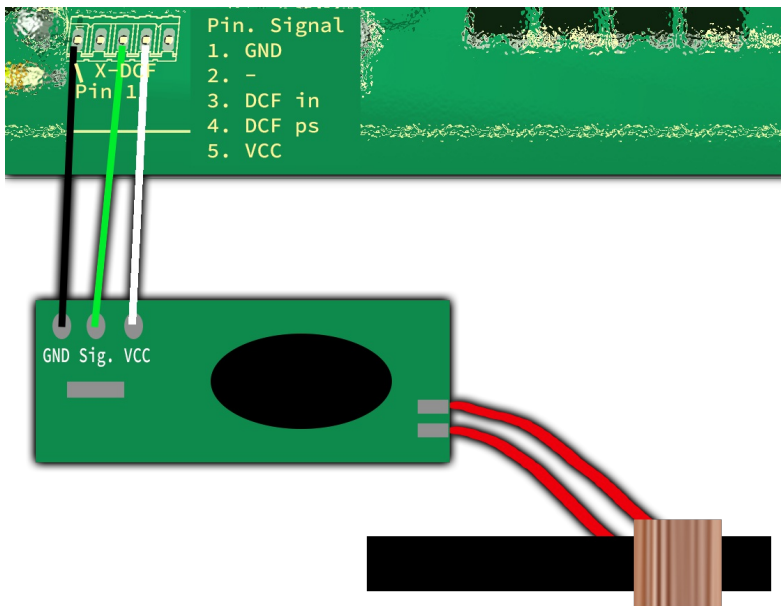


Figure 36: DCF connection with PowerSave

In this figure above you can see a wiring with the PowerSave signal as VCC for the DCF receiving module. Here the receiving module is only supplied with voltage while the analysis is being carried out. When using this, make sure that the setting in the DCF menu does not invert the PowerSave output (see "Power save pin invert")!

#### With Power On / Off or Power Save input

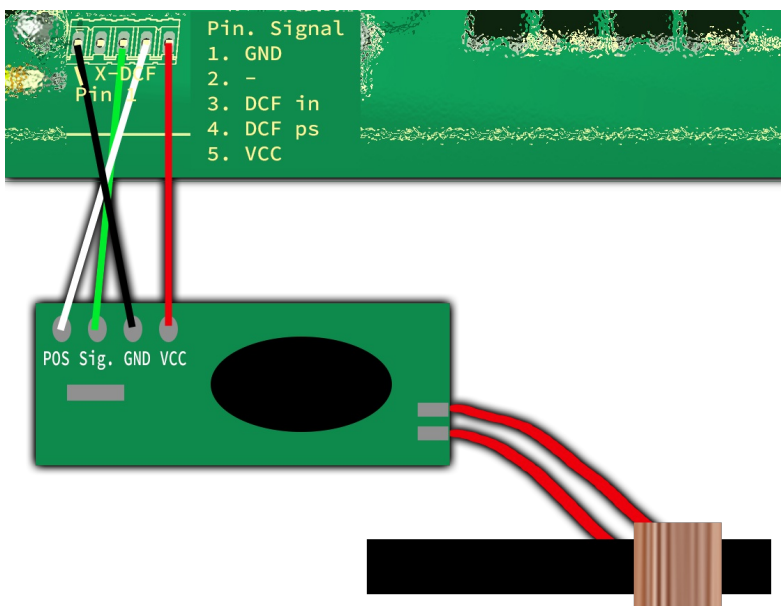


Figure 37: DCF connection with VCC and PowerSave

Here you can see the wiring with VCC and the PowerSave signal. Here the receiving module is only switched on while the analysis is being performed. A supply of voltage is permanent.

## Power supply properties

Since the clock is usually to be operated on a 230 volt power supply, a power supply unit is required. This can be a normal transformer power supply or a switching power supply.

Transformer power supply:

- Pro:
  - Cheap
  - Little interference for DCF reception
- Contra:
  - Heavy
  - Depending on the power is it big
  - Poor efficiency

- Even if the circuit requires little power, some power may be needed
- Higher electricity costs

#### Switching Power Supply:

- Pro:
  - Light
  - Small
  - Good efficiency is possible
  - Standby possible with very low power requirements
  - Lower electricity costs than with the transformer power supply
- Contra:
  - Larger interference for DCF reception
  - Usually a little more expensive

Switching power supplies should be preferred, unfortunately they have the disadvantage that many can interfere with the DCF reception and the DCF clock is not synchronized. Switching power supplies with a PE feedthrough (PE is connected to ground) often have better interference behavior, but this cannot be generalized. The switching power supplies offered in our shop have been tested and only minimally interfere with DCF reception.

#### WARNING

Use only a power supply unit with electrical isolation!

## Quartz - Accuracy of the time

The quartz, microcontroller, quartz capacitor combination decisively determine the accuracy of the clock. Since the kit is delivered unassembled, prior coordination is not possible and only uncalibrated accuracy is ensured.

The supplied accuracy is completely sufficient for normal use if the clock is synchronized daily with the DCF time.

The accuracy can be measured on the TB pin, which can be found in the pin assignment in the corresponding data sheet for the IC. If the clock is inaccurate, first check the soldering points of the quartz, the quartz capacitors and the controller. These solder points must be correctly soldered and dirt such as Flux should be removed.

You can carry out a calibration yourself with the appropriate measuring equipment or you can order it from us with cost. Check the [items in our shop](#).

To carry out the calibration, measure on pin TB with a multimeter, which frequency or period measurement can or with a frequency meter the output frequency. This should be as accurate as possible at 1 kHz or 1ms (for period measurement). A long gate time (duration of the frequency measurement) is advantageous because the interrupts create a little jitter (slight variation in the frequency). The calibration can be done digitally in firmware in somewhat rough steps in the menu "Calibrate quartz" or with a trim capacitor (this is not listed in a kit or parts list) in very fine steps. The best result is achieved by a trimming capacitor. However, since these are rarely produced, they are expensive and the increase of accuracy is minimal. Furthermore, for trimming capacitors you need a good tactile adjustment tool, a "normal" screwdriver usually does not work.

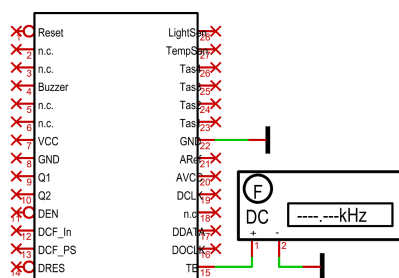


Figure 38: Calibrate quartz

#### NOTICE

Of course, the measuring device must have a corresponding accuracy.

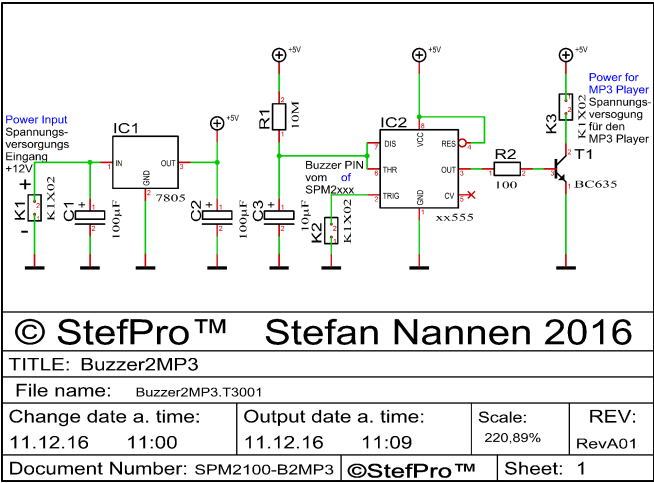
## Buzzer to MP3 player

If an MP3 player is to be used instead of a self-exciting buzzer, a small circuit must bridge the signal off time.

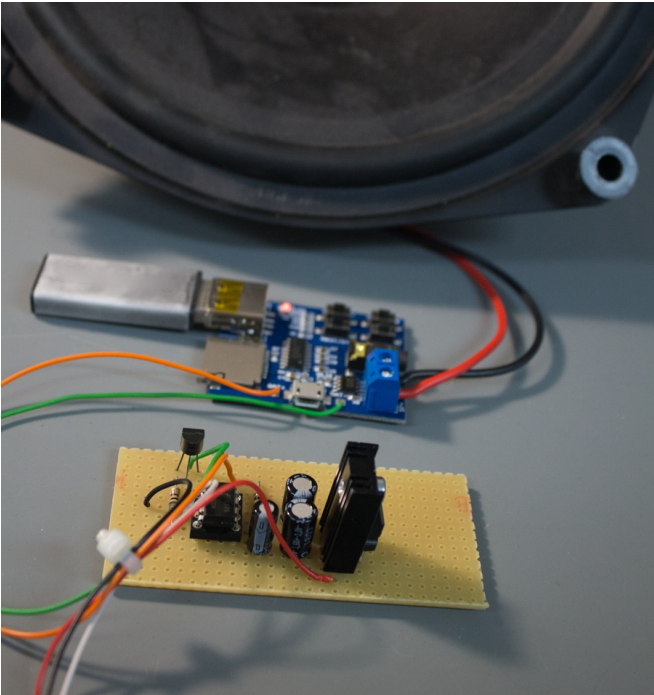
This is possible with this very simple circuit, with a NE555, build-up as a retriggerable mono-flop.

Furthermore, there is a small power supply for the MP3 module, because most of the imported modules requires a voltage supply of 5 volts. The current is still acceptable with a connected 4 Ohm loudspeaker for a 7805 with heat sink and a current of 200 to 500 mA, since the alarm should not play for more than 30 min. However, it is also possible to use a PIN compatible DCDC converter by different manufacturers.



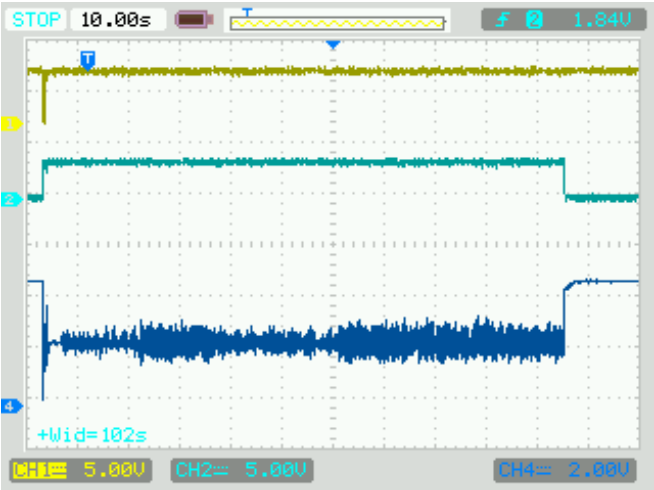


Combination R1 and C3 gives a mono time of approx. 2 min.



Colors of thin wires:

- red: plus supply voltage (<= + 12 Volt)
- black: minus supply voltage
- white: Buzzer signal from the IC SPK2141.02
- orange: plus MP3 Player Module (+5 Volt)
- green: minus MP3 Player Module

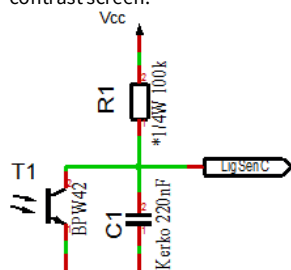


Colors of the signals:

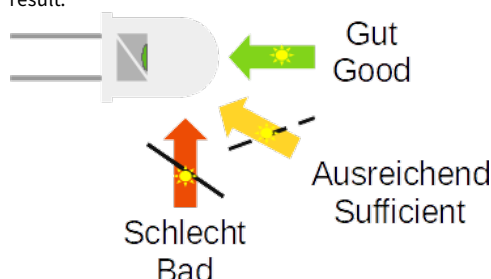
- yellow: Trigger signal
- light blue: MP3 Player Power Supply
- dark blue: Output from the MP3 Player

### Properties of light sensor with Phototransistor

The light sensor is used to control the brightness of the display. As light sensors many phototransistors are suitable, in the example circuit a BPW42 is used. If another phototransistor is used, may you need to change the value of the pull-up resistor R1. The menu allows to adjust the calculation factor, offset and the control speed. If the sensor is mounted behind a contrast panel, it must be taken to ensure that the wavelength of the phototransistor can pass through the contrast screen.



In the case of the BPW42 and similar photo transistors in the LED diode housing, the incidence of light must take place as follows in order to achieve the best result:



### NOTICE

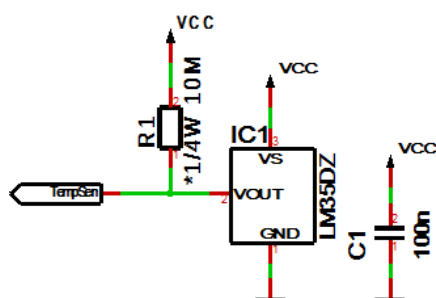
When using a different phototransistor or a different photodiode, it may be necessary to adapt R1 (top picture) and the settings in the menu!

### Temperature sensor

The temperature sensor is used to display the temperature and it must be an analog sensor with 10mV / 1°C. This is to be connected to the temperature sensor input (TempSen).

From version 1.79-144 the temperature sensor can be calibrated and also display negative temperatures. The calibration is done with one decimal place, but the display is always an integer.

When installing the temperature sensor, make sure that it does not receive any foreign heating, installation directly on the circuit board can make a difference of several Å° C (Kelvin) under certain circumstances!



R1 is optional for the detection of whether a sensor is connected or not; this is not necessary with permanent wiring.

### Method of calibration with a temperature value

You can carry out a calibration with a temperature value yourself with a suitable temperature measuring device.

1. Use a temperature measuring device that is as accurate as possible to measure the temperature that the connected temperature sensor is exposed to; ideally, both sensors are thermally coupled.
2. Select Show temperature in the menu and press the + button for longer than a second, the currently measured temperature is displayed.
3. Set the temperature from the precise temperature measuring device and wait briefly until the display jumps back.
4. The correct temperature should now appear on the display. If this is not the case, repeat the process.

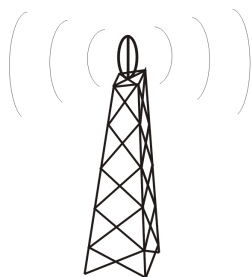
**Procedure for calibration with an offset value**

The calibration with offset value is intended if you buy a sensor with a previously measured offset value.

1. Select Display temperature in the menu and press the button for longer than one second, the current offset value is displayed.
2. Set the supplied offset value and wait briefly until the display jumps back.
3. The correct temperature should now appear on the display. If this is not the case, please contact us.

The calibration only refers to the offset, the linearity cannot be changed!

## Installation the DCF clock



Sender in Frankfurt

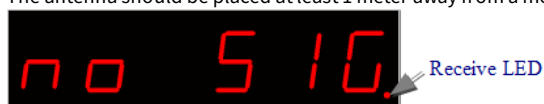


DCF77-Antenne

Figure 39: Align the DCF antenna

The external antenna receives the DCF77 signal and should be directed to Frankfurt, as shown in Figure 39.

The antenna should be placed at least 1 meter away from a monitor, computer or other disturbing electronic devices .



During installation, the receiving LED can be used as an orientation to the quality of reception. The LED should flash at intervals of one second. If the antenna is properly aligned and the signal is strong enough, the display changes of „no signal„ (No impeccable DCF77 signal) in „SEArCH„ (search for the 59th second). Was the 59th second found so will the display shows „rEAd60„ (read the DCF time) henceforth. It still takes 60 seconds to display the correct time. If the clock is not synchronized to the DCF time, the receiver LED flashes DCF work cycle (power reserve is in operation), if the LED is enabled in the menu. Is the display not changed to „SEArCH„, the antenna is probably disturbed by a device or the antenna is too close to the display. Because the DCF antenna is so sensitive that it can disturb by the display in the near field, there is the possibility to reduce the brightness of the display during the synchronization, or to deactivate the display. This problem have all other DCF clocks with multiplexed LEDs displays also. By a darker display the DCF antenna can be mounted significantly closer to the display.

### Synchronize with active display

This mode is active when in menu under "receive brightness" the brightness is set > 0.

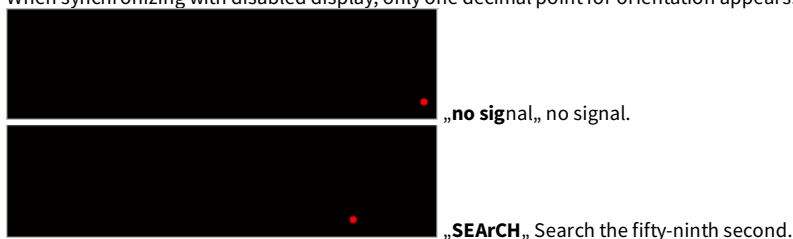
Appearance of the text on the screen:



### Synchronize with deactivated display

This mode is active when in menu under "receive brightness" the brightness is set to 0.

When synchronizing with disabled display, only one decimal point for orientation appears.





„rEAdXX“, read the dcf time.

## Emitted electrical disturbances by the display

In the near field generates the display, by the fast on and off switching of the LEDs, disturbances. These depend on the brightness of the display. For EMC / CE conformity these disturbances are uninteresting because they are strong only in the near field and occur only under 30 MHz. For sensitive antennas as a DCF77 antenna these disturbances may be problematic, because this increases the distance between the antenna and the display.

To illustrate, a few simple relative measurements were performed with an oscilloscope:

## Test setup

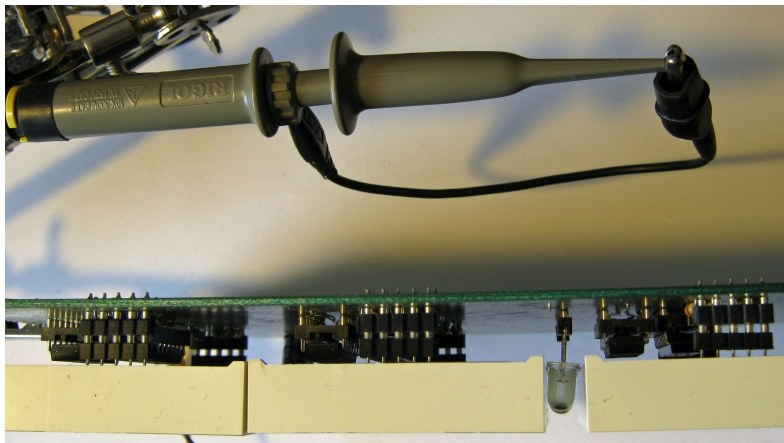


Figure 40: Test setup for the measurement

## Measurement results

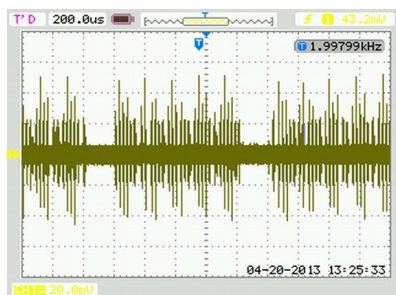


Figure 41: Measurement display is switched off

Figure 41 the display is off, only a decimal point indicates the synchronization status of the DCF time. The "Receive brightness" is on brightness level 0. Only the data packets to determine every second.

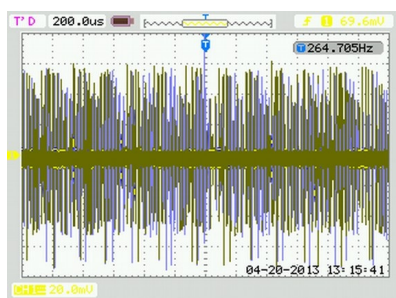


Figure 42: Measurement with brightness level 15

Figure 42 shows the display brightness set to 15 and there will be something displayed. It can be seen slight disturbances in the near field.

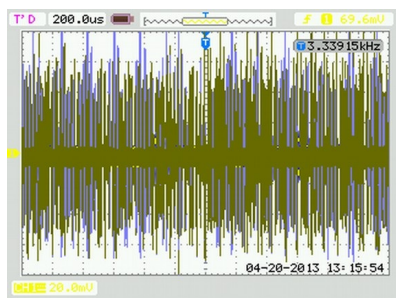
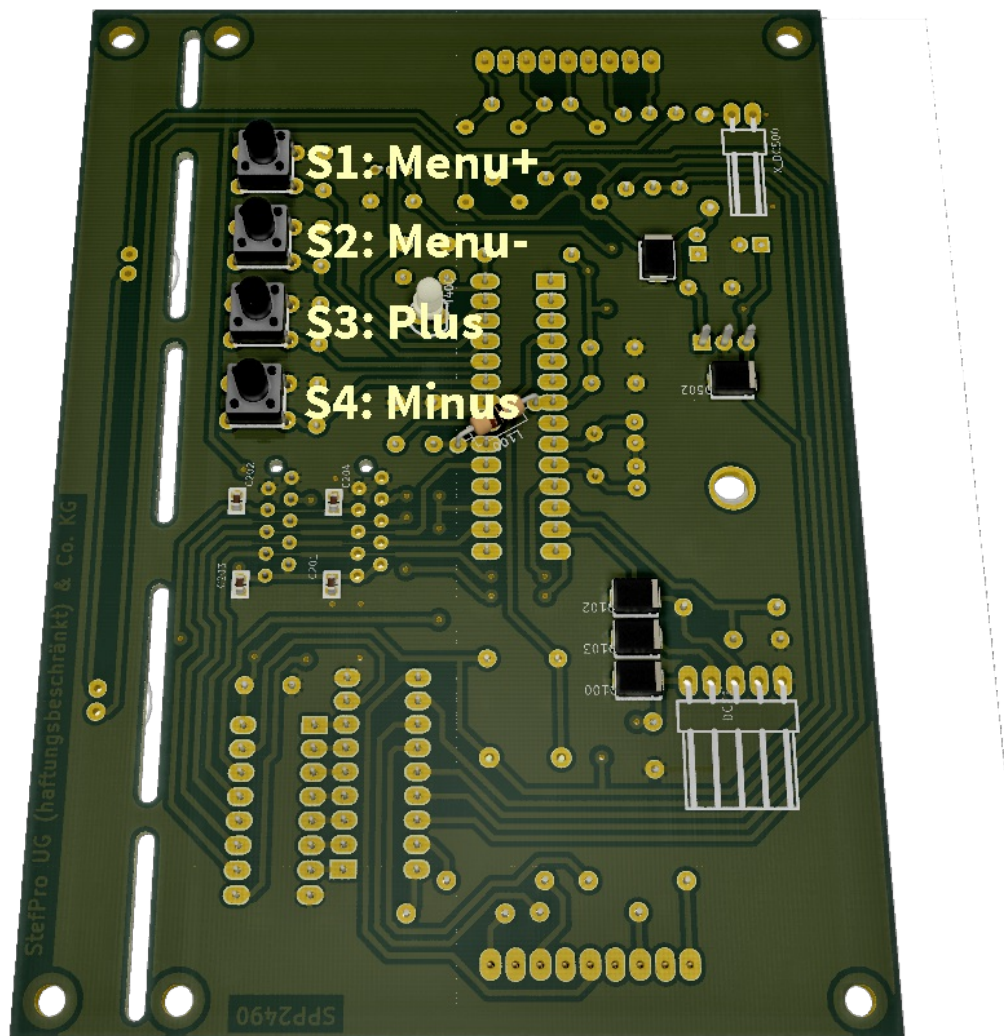


Figure 43: Measurement with brightness level 25

Figure 43 shows on the display brightness set to full brightness level 25 and it will be something displayed. There can be seen big disturbances in the near field. The measurements were performed with a oscilloscope with 200 MHz bandwidth, a probe 10/1 (in order to obtain the full range) and PeakDetect. It was used the circuit SPP2400.

# Button description

## Overview of buttons



## Button functions

Menu+	Opens the menu, next setting
Menu-	Opens the menu, previous setting
Plus or +	Function key, usually +, On or jump into and exit a submenu
Minus or -	Function key, in general - or off

To open the menu you have to press one the menu buttons. Use the menu+ button to navigate forward and the menu- button to navigate backward.

## General key functions

- A submenu is always opened with the "Plus" or "+" key and with menu display "... E" it can be exited again with "Plus" or "+".
- For numerical properties, the number is increased with the "Plus" or "+" key and decreased with the "Minus" or "-" key.
- If it is an On / Off property, then "Plus" or "+" sets On and "Minus" or "-" sets Off.
- With lists, the value is changed according to the order with the "Plus" or "+" button, with "Minus" or "-" this happens in the opposite way.
- In special cases, this is described in detail next to the images.

## Menu



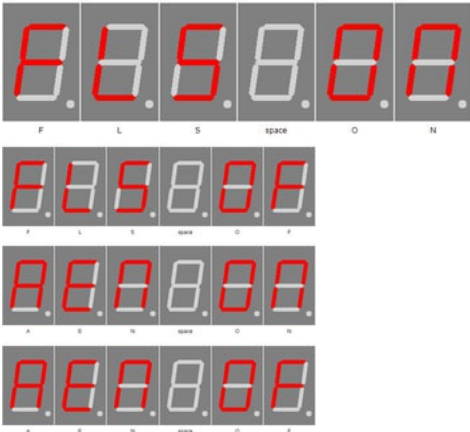
Level 1	Level 2
Normal⌵	
Display mode of clock⌵	
Show Temperature⌵	
Alarm⌵	Alarm enable →Alarm time hour →Alarm time minute →Alarm snooze time →Alarm sound wait time →Alarm maximum time →Alarm exit⌶
Brightness⌵	Brightness menu →Brightness max →Brightness min →Brightness automatically →Brightness speed →Brightness factor →Brightness offset →Activate standby →StandBy start hour →StandBy end hour →StandBy Brightness →Exit brightness settings⌶
DCF⌵	DCF active →Receiving brightness →Hour of synchronization →Receive state display →DCF input pull up →DCF input invert →Power save pin invert →DCF sensitivity →DCF exit⌶
Clock Settings⌵	Set hour →Set minute →Set year →Set month →Set day →Day of week →Set time →Calibrate quartz →Exit clock settings⌶
Info section⌵	
IC number⌵	
Firmware version⌵	

⌵: Next step in main menu.

→: Next step in sub menu.

⌶: The submenu starts again.

Normal

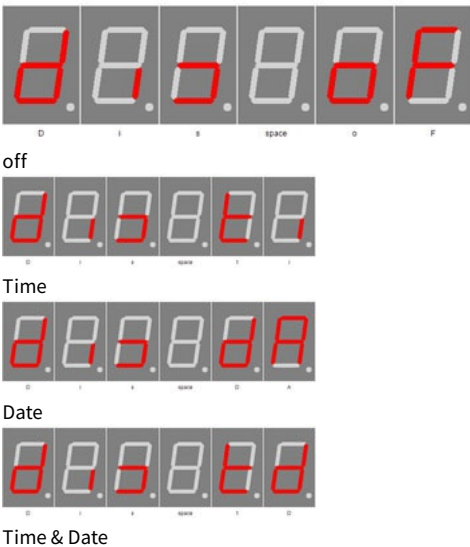


Normal mode, outside of the menu.

Here the plus (+) button has the function of the alarm temporary switch on or off.

The minus (-) key switches the display back to 100 % (flashlight, automatic brightness control is switched off) or to normal brightness.

Display mode of clock



- Use plus (+) and minus (-) to set the mode how to display time and date.
- OF: Does not display the time / date. When the temperature display is active, the temperature is displayed continuously. If no temperature display is possible or active, dashes (-) are shown in the display.
  - ti: Shows only the time.
  - dA: Shows only date.
  - td: Shows time and date alternately.

NOTICE

If the temperature display is active, always alternate with it.

Show Temperature



Display temperature on



Display temperature off

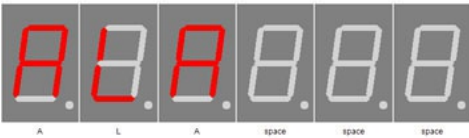


Temperature calibration

Enables the temperature display. Plus (+) enables the temperature display and minus (-) disables it.

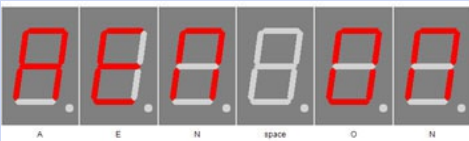
Long press plus (+) activates the calibration via temperature input, long press - activates the calibration via offset value. You can find more information in the chapter "Temperature sensor" - "Method of calibration ...".

Alarm



ALARM

Alarm enable



ALARM ON

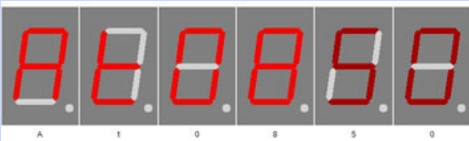


ALARM OFF

With plus (+) you enter the sub-menu Alarm.

Enables the alarm. Plus (+) sets the alarm to "AEN ON" and minus (-) sets it to "AEN OF".

Alarm time hour



Alarm hour

Use plus (+) and minus (-) to set the hour for alarm.The number can be 0-23

Alarm time minute



Alarm minute

Use plus (+) and minus (-) to set the minutes for alarm.The number can be 0-59

Alarm snooze time





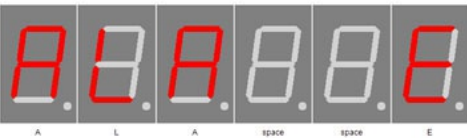
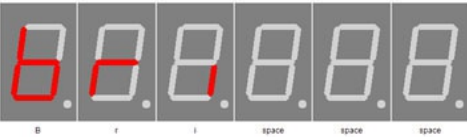


Alarm snooze time

Use plus (+) and minus (-) to set the minutes for the snooze function.The number can be 1-30

NOTICE

If "alarm maximum time" is shorter than alarm snooze time, the snooze function is disabled!

The snooze function can be activated in alarm/wake-up mode with plus (+) and minus (-) and the alarm can be stopped with the menu buttons.

<div>Alarm sound wait time</div> <div></div> <div>Alarm sound delay</div>	<div>Use the plus (+) and minus (-) buttons to set the maximum alarm duration in minutes. The number can be 0 - 10.</div> <div><div>NOTICE</div><div>If "Alarm sound delay" greater selected as maximum alarm time, then the display is only set to 100% brightness! No buzzer alarm!</div></div>
<div>Alarm maximum time</div> <div></div> <div>Alarm after time</div>	<div>Use plus (+) and minus (-) to set the maximum time in minutes for the alarm. The number can be 2-60.</div>
<div>Alarm exit</div> <div></div> <div>Alarm exit</div>	<div>With Plus (+) you exit the sub-menu alarm.</div>
<div>Brightness</div> <div></div> <div>Brightness</div>	<div>With plus (+) you enter the sub-menu brightness.</div>
<div>Brightness menu</div> <div></div> <div>Brightness</div>	<div>Sets the brightness of the menu. The number can be between 10 and 25, with 10 being the darkest menu and 25 the lightest.</div>
<div>Brightness max</div> <div></div> <div>Brightness high</div>	<div>In this menu item, the maximum brightness plus (+) and minus (-) of the display can be adjusted.</div> <div>This is also used when auto brightness is disabled.</div> <div>The number can be between 0 and 25, with 0 being the darkest and 25 the lightest.</div>

Brightness min



Brightness low

In this menu item, the minimum display brightness can be adjusted with plus (+) and minus (-).  
  
The number can be between 0 and 25, with 0 being the darkest and 25 the lightest.

Brightness automatically



Brightness automatically on



Brightness automatically off

This allows to turn on with plus (+) and off with minus (-) the auto brightness.

Brightness speed



Brightness speed

Use plus (+) and minus (-) to set the speed of auto brightness.  
  
The number can be between 0 and 20 and delays the brightness calculation by approx. 100 ms. With the setting 20, the brightness is therefore recalculated every 2 seconds. The maximum value may differ depending on the firmware.

Brightness factor



Brightness factor

Use plus (+) and minus (-) to set the calculation factor for auto brightness.  
  
The number can be 1-99. There is no unit for this, as it cannot be defined due to component tolerances.

Brightness offset



Brightness offset



Brightness offset -99



Brightness offset +99

Use plus (+) and minus (-) to set the calculation offset for auto brightness.  
  
The number can be between -99 and 99. There is no unit for this, as it cannot be defined due to component tolerances.

Activate standby



StandBy (Powersave) Enable On



StandBy (Powersave) Enable Off

With plus (+) activate and minus (-) deactivate the standby mode, in this case the display is switched off or darkened. This depends on the "standby brightness". The clock and alarm function are still available, the time, date or temperature are simply not displayed.

Through the flashlight function can this interrupted.

StandBy start hour



StandBy (Powersave) Start Hour

The standby operation starts from this hour. Only full hour can be set by plus (+) and minus (-).

The range is from 0 (midnight) to 23 (11pm).

StandBy end hour



StandBy (Powersave) Finish Hour - Endstunde

From this hour on, standby operation ends. Only full hour can be set plus (+) and minus (-).

The range is from 0 (midnight) to 23 (11pm).

StandBy Brightness

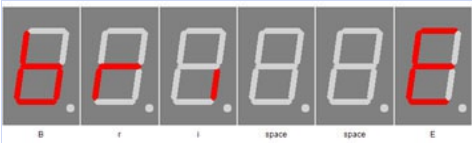


StandBy (Powersave) Brightness level 1

Use plus (+) and minus (-) to adjust the brightness of the display in standby mode, 0 means off.

The range is 0 to 90, but 90 corresponds to 9 of the other brightness settings in this menu.

Exit brightness settings



With plus (+) you exit the sub-menu brightness.




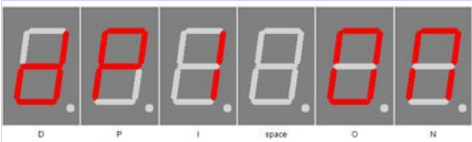

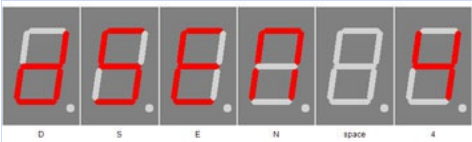
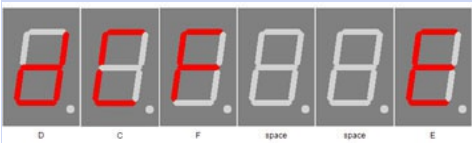
DCF



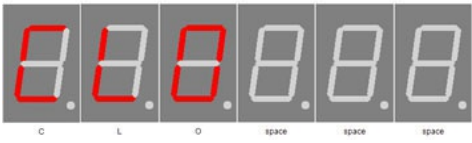

DCF

With Plus (+) you enter the sub-menu DCF.

<div><b>DCF active</b></div> <div></div> <div>DCF active on</div> <div></div> <div>DCF active off</div>	<p>Use plus (+) and minus (-) to set whether or not DCF reception is active. If the DCF reception is deactivated, the clock only works with the built-in quartz clock. Note that in this case the time base must be set as well as possible.</p>
<div><b>Receiving brightness</b></div> <div></div> <div>Receiving brightness</div>	<p>Use plus (+) and minus (-) to set the brightness during the DCF receiving. If 0, the display is turned off and the status of the synchronization is shown by decimal points. The number can be 0-25.</p>
<div><b>Hour of synchronization</b></div> <div></div> <div>DCF synchronize hour</div> <div></div> <div>DCF synchronize hour disabled</div>	<p>Use plus (+) and minus (-) to set the hour in which the DCF clock will synchronize. In this hour, the DCF signal will be analyzed until a synchronization has occurred or the hour changes.</p> <p>The number can be 0-23.</p> <p>If the display shows "--" instead of a number, the synchronization hour has been deactivated and the dcf receiver is constantly trying to synchronize. In this case, the receipt display can also be displayed permanently.</p>
<div><b>Receive state display</b></div> <div></div> <div>DCF status decimal point display</div>	<p>Use plus (+) and minus (-) to set the mode for the receive LED, which shows the received signal. The number can be 0-2.</p> <ul style="list-style-type: none"><li>• 0: Only until the clock has been synchronized.</li><li>• 1: Shows the received signal when the clock is not synchronized with the DCF77 signal.</li><li>• 2: During the synchronization phase, the receive signal is always on the receive LED regardless of the DCF77 synchronization flag.</li></ul> <p>Only while the clock is trying to receive the DCF signal, see "Hour of synchronization".</p>
<div><b>DCF input pull up</b></div> <div></div> <div>DCF input pull up auto</div> <div></div> <div>DCF input pull up on</div> <div></div> <div>DCF input pull up off</div>	<p>DCF77 input pin with pullup</p> <ul style="list-style-type: none"><li>• AU: Pull Up is automatically ( default ). AU is activated by pressing the plus (+) button.</li><li>• ON: Enables the pull-up resistor</li><li>• OFF: Disables the pull-up resistor ON and OFF is activated and toggled by the minus (-) button.</li></ul> <ul style="list-style-type: none"><li>• Conrad DCF module = ON</li><li>• ELV DCF module = ON</li><li>• Pollin DCF module (3.3 V) = OFF</li></ul> <p>No guarantee for correctness of the information and changes of the manufacturer.</p>

<div><div>DCF input invert</div><div></div><div>DCF input invert auto</div><div></div><div>DCF input invert on</div><div></div><div>DCF input invert off</div></div>	<div>DCF77 inverting the input pin</div> <div><ul style="list-style-type: none"><li>• AU: input is automatically inverted or not (default). <i>AU is activated by pressing the plus (+) button.</i></li><li>• ON: Input inverts</li><li>• OFF: no input inverted <i>ON and OFF is activated and toggled by the minus (-) button.</i></li></ul><ul style="list-style-type: none"><li>• Conrad DCF module = for PIN3 ON, PIN4 OFF</li><li>• ELV DCF module = ON</li><li>• Pollin DCF module (3.3 V) = OFF</li></ul></div> <div>No guarantee for correctness of the information and changes of the manufacturer.</div> <div>If the receive LED is <u>off</u> every second, the setting must be inverted.</div>
<div><div>Power save pin invert</div><div></div><div>DCF powersave invert on</div><div></div><div>DCF powersave invert off</div></div>	<div>Inverts DCF77 power On / Off output, plus (+) enables inversion and minus (-) disables it:</div> <div><ul style="list-style-type: none"><li>• ON: Power ON / OFF output is inverted (module ON at GND)</li><li>• OFF: power on / off output is not inverted. (module ON at VCC)</li></ul><ul style="list-style-type: none"><li>• Conrad DCF module = No power on / off input pin available</li><li>• ELV DCF module = No power on / off input pin available</li><li>• Pollin DCF module (3.3 V) = ON</li></ul></div> <div>No guarantee for correctness of the information and changes of the manufacturer.</div> <div>Read the instructions of the receiver module for the power on / off pin of the DCF module to set this setting correctly. Many modules do not have this pin, then this setting can be ignored.</div>
<div><div>DCF sensitivity</div><div></div><div>DCF sensitivity</div></div>	<div>Use plus (+) and minus (-) to set the DCF Sensitivity. 1 has a very low tolerance and 6 has the highest tolerance for reception. The Sensitivity should be set as small as possible to avoid incorrect receiving. The number can be 1-6. Tolerance means the deviation from the high and low of the time signal, i.e. 100 or 200 ms of the DCF signal.</div>
<div><div>DCF exit</div><div></div><div>DCF Exit</div></div>	<div>With plus (+) you exit the sub-menu DCF</div>

Clock Settings

<div><div>clock</div><div></div></div>	<div>With plus (+) you enter the sub-menu clock.</div>
<div><div>Set hour</div><div></div><div>change time</div></div>	<div>Use plus (+) and minus (-) to set the hour. The number can be 0-23.</div>

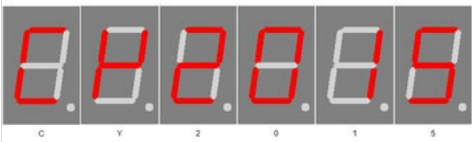
Set minute



change time

Use plus (+) and minus (-) to set the minute.  
The number can be 0-59.

Set year



change year

Use plus (+) and minus (-) to set the year.  
The number can be 2000-2099.

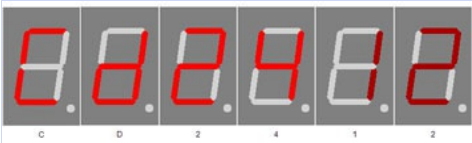
Set month



change month

Use plus (+) and minus (-) to set the month.  
The number can be 1-12.

Set day



change day

Use plus (+) and minus (-) to set the day, limit by month.  
The number can be 1- 28, 29, 30, 31.



Day of week



Monday - Montag



Tuesday - Dienstag



Wednesday - Mittwoch



Thursday - Donnerstag



Friday - Freitag

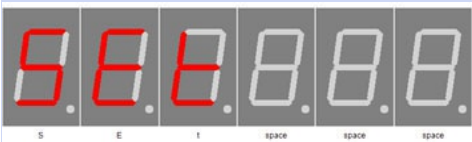


Saturday - Samstag



Displays the day of the week from the set date.

Set time



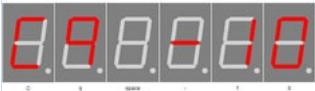
Set settings

Plus (+) sets the time, while looking for DCF time, otherwise the time will be provided directly.

Calibrate quartz



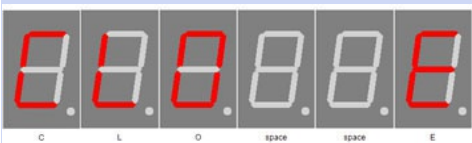
Calibrate quartz +10



Calibrate quartz -10

With plus (+) and minus (-) the quartz can be calibrated, a positive value increases the period time and a negative value reduces it. The period should also be set as precisely as possible to 1ms or 1kHz (for frequency measurement). The measurement must be carried out on pin TB. Further information can be found in the chapter [Quartz properties - Accuracy of the time](#).

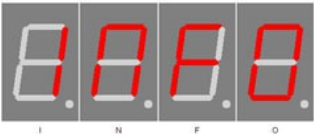
Exit clock settings



Clock end

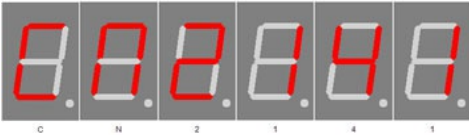
With plus (+) you exit the sub-menu clock. Until here the clock, without DCF synchronization, will be taken and used until the next scheduled synchronization.

Info section



This indicates the start the information area

IC number



IC / device type

Chip number

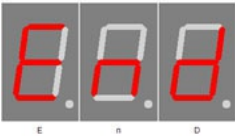
Firmware version



Firmware version  
Example, it might be something else at this point.

Firmware version

Menu end



End of the menu, hide automatically after 2 seconds.


End

# Attachment

## Bootloader handling

### Start the IC/module/device in bootloader mode

1. Switch off the IC/module/device.
2. Connect the UART adapter (USB → 3.3 volts or 5 volts UART or RS232 → 3.3 volts or 5 volts UART).  
"RXD" → UART adapter TXD and "TXD" → UART adapter RXD.
3. Press the button S1, power up the IC/module/device with voltage and do not release this button until you hear a short BEEP. The display is off.
4. Now you can connect to the firmware upload tool.

 **WARNING**

**Wrong UART level**  
If an incorrect voltage level (for example directly RS232, ± 12 Volt) is used, the UART adapter or the IC/module/device can be damaged or destroyed. In the worst case, overheating and fire may occur!

**NOTICE**

**Defect firmware**  
Defect firmware can be detected as follows: Every second a short BEEP.

### Use the Firmware Upload Tool to upload an update

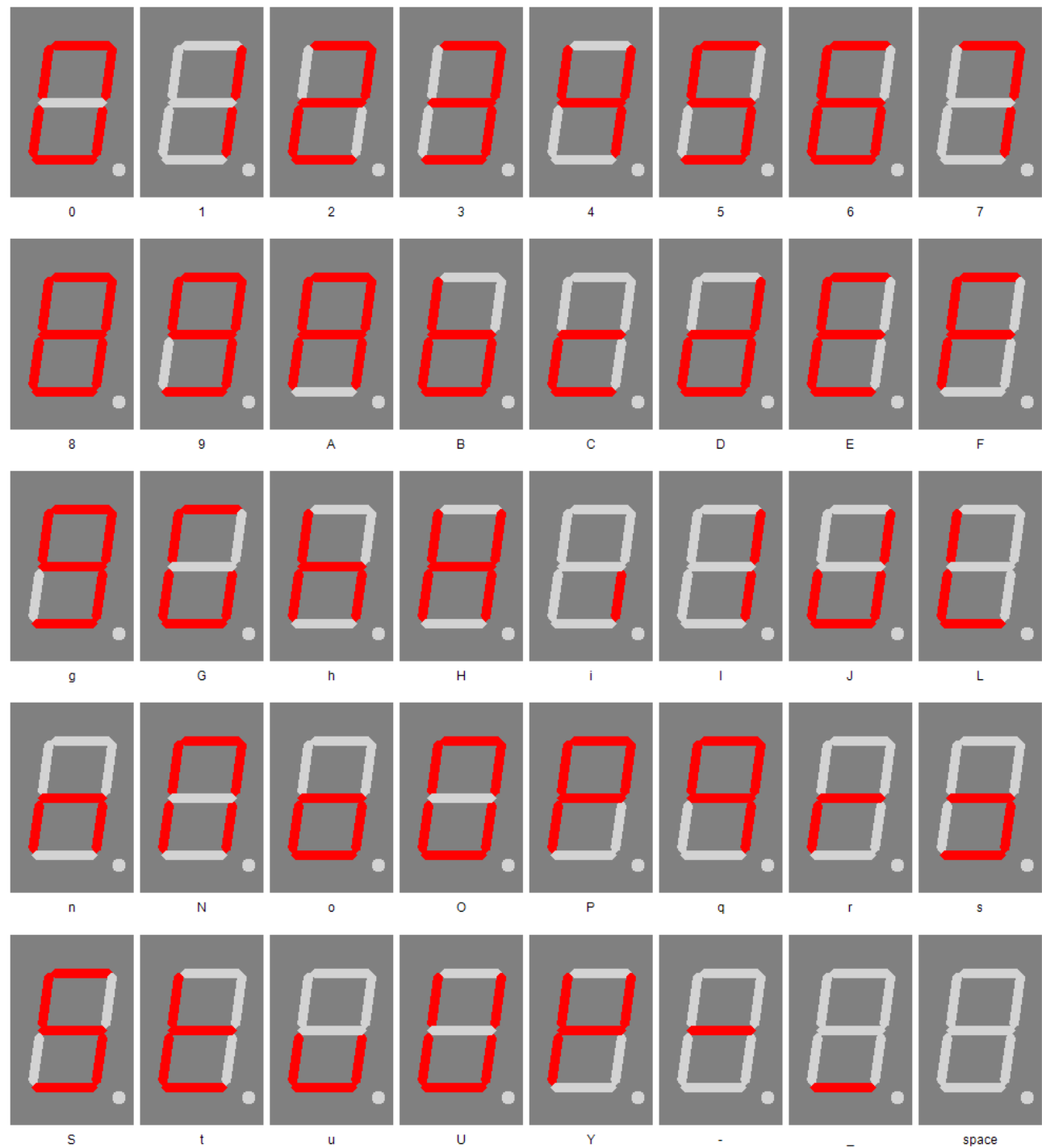
1. Download the latest upload tool from www.stefpro.biz: [SP Firmware UP](#)
2. Start the tool
3. Select the COM port.
4. Press the "Load" button and select a firmware which you have previously downloaded from SP Firmware UP
5. Now press the "Connect" button, the data from the IC / Module / device will be read and the compatibility of the new firmware with the IC / module / device will be checked
6. If an upload is possible, you can now press the "Upload Firmware" button. The upload starts and should not be interrupted.

**NOTICE**

**Firmware upload interruption**  
If the firmware upload is interrupted or uploaded an inappropriate firmware, so there is a broken firmware, the IC can be operated only in bootloader mode.

7 segment characters

The symbolism of each character:



Change log

Safety

20.03.2017 - 1.0.3 - ADD  
Add ESD note

DCF module properties

21.11.2016 - 1.0.1 - ADD  
Add list of tested modules  
20.03.2017 - 1.0.3 - ADD  
Update list of tested modules, add standard pin assingment

## Power supply properties

21.12.2019 - 1.0.5 - ADD

Add SNT description

## Buzzer to MP3 player

09.12.2016 - 1.0.2 - ADD

Add buzzer to mp3 player change description

## Temperature sensor

22.03.2021 - 2.0.1 - ADD

Add add temperatur sensor and calibration description

## Set day

23.04.2017 - 1.0.4 - ERROR

Bugfix wrong title, this sets the day not the month.

# Liability, warranty and copyright notice

## Definitions

- „Kit“: A bare printed circuit board and associated components, which when assembled form a module.
- "Module": A PCB which is delivered without housing and is intended for installation.
- "Manufacturer of the whole device": The manufacturer of the whole device, the natural or legal person is mounted a device which can be made to function without special knowledge. E.G. Simple connection to the network via a euro, safety plug or by connecting to a power supply.

## Liability

- Although the information contained in this document has been checked very carefully for accuracy and completeness, for errors and omissions can not be held liable. StefPro reserves the right to any time change any portion of the described hardware and software features.
- StefPro provides only specific "module" which is intended for installation. The "Manufacturer of the whole device" obliges to compliance to the relevant validated VDE, CE and EMC regulations. StefPro has verifies compliance with the requirements for this module random. Because the installation is not performed by StefPro, must additional inspection after installation of the modules by the "Manufacturer of the whole device". If anything is unclear, please ask a question using the contact form.
- There is no liability for damages incurred directly by or in the application of the "module", as well as for damage caused by chemical or electrochemical effects of water or generally from abnormal environmental conditions.
- "Kit" and resulting "modules" by StefPro may not be used in critical equipment. At disregard exclusively the responsibility of "Manufacturer of the whole device."

These include:

- medical devices for implanting or life obtained.
  - Critical equipment for space, aerospace and traffic.
  - Other important life components or systems, where an error is fatal.
- All devices developed with a "Modules" by StefPro must be the responsibility of the "Manufacturer of the whole device" sufficiently tested to detect any defects.

## Safety Notes

- Since the built module is operated with an electrical voltage, the valid VDE regulations are complied with.
- Components and modules do not belong in the hands of children!
- The module complies with the requirements of protection class III.
- The "module" may NOT directly to line voltage (or voltage > maximum operating voltage) in any case! It can be fatal!
  - Whenever it is that safe operation is no longer possible, the module / device must be taken out of service and secured against inadvertent operation. This assumption is justified,
  - when the module / device has visible damage,
  - when the module / device has loose parts
  - when the module / device no longer works
  - after prolonged storage under unfavorable conditions (eg outdoors or in moist environments)

Watch for correct voltage and connection of the "module" Voltage and / or connection mistakes are beyond our control. Thus we can not assume any liability for damages arising out of it.

## Intended operation

- The used electrical parts and components are designed for a temperature between 0 °C ... +45 °C, so the device may only be operated and stored in this temperature range. It is therefore intended for use within a building, which corresponds to the specified environmental conditions. During transport, the temperature may be between -10 °C ... + 50 °C.
- If condensation has formed during transport or storage, the modules must be acclimatized for approx. 2 hours before commissioning.
- It must not be operated in an increased dust, high humidity, explosion risk or aggressive chemical exposure.
- Ensure proper operation and connection. Operating and/or connection errors are outside our area. Unfortunately, we can not accept any liability for damages resulting of this.
- The improper operation of this module may result in damage of this module, personal injury or property damage.
- The safety instructions must be observed!
- The manufacturer is not responsible for all personal injury and property damage caused by improper operation.

## Warranty

- StefPro warranty only for the Kit and their firmware. The warranty is exclusively limited for the replacement of the IC within the warranty period for obvious defects in the hardware, and programming error.
- Warranty does not extend the warranty period or starts a new period again.
- Additional or deviating claims are excluded, especially claims for damages arising out of the product for damage. This will not affect claims based on

inalienable rules under the product liability law.

## **Copyrightnotice**

The circuitry and firmware to the kit and module from StefPro are protected by copyright. Unauthorized reproduction or distribution of Modules with this program or any portion of it. This is pursued both criminal and civil law, and may result in severe penalties and compensation for damages.

## Disposal information

Do not dispose devices in household garbage!

This modules or devices comply with the EU directive on electronic and electrical equipment (WEEE regulation) and therefore may not be disposed of with household waste. Dispose of the device over your local collection center for electronic equipment!



WEEE-Reg.-Nr.:

DE 58929072 ( StefPro UG (haftungsbeschränkt) & Co. KG )

DE 78089358 ( StefPro Einzellunternehmen bis zum 01.01.2015 )

## Impress

**StefPro™ UG (haftungsbeschränkt) & Co. KG**  
**- Softwareentwicklung für Prozessoren**

Dipl. Ing. (FH) Stefan Nannen

Theilenmoorstr. 11

26345 Bockhorn – Germany

Phone: +49-4452-709175 (please note our [business hours](#))

Web: <http://www.stefpro.biz/>

E-mail: [info@stefpro.biz](mailto:info@stefpro.biz)